

# BULLS

*for* EVERY BUDGET

*Annual Bull & Female Sale*



*Thursday, February 12, 2026*

**SALE BEGINS AT 2PM**

**STETTLER AUCTION MART, STETTLER, AB**



# BULLS

*for* EVERY BUDGET

***Thursday, February 12, 2026***

**SALE TIME 2PM MST**

**Stettler Auction Mart, Stettler, Alberta**

*Join us for Bulls, Beers, and Pizza*

**FEBRUARY 11<sup>th</sup> • 3PM-6PM**

Viewing of the bulls at the Stettler Auction Mart

***Join us for a Bulls, Beers & Pizza Social***

**JOIN US FEBRUARY 12<sup>th</sup>**

12:00PM: Prime Rib Beef on a Bun

**2:00PM: SALE TIME**



*Catalogue created by 14 West Creations*

# Welcome from SPRINGSIDE CATTLE

## WELCOME TO THE 2026 BULLS FOR EVERY BUDGET ANNUAL BULL & FEMALE SALE

It is with great pride that we welcome you to our annual sale on February 12th, 2026, at the Stettler Auction Mart. This year marks a significant milestone as we celebrate 43 years of breeding Charolais cattle. Looking back over four decades, we truly believe this offering represents the very best of our program's longevity and performance.

There is a saying that if you surround yourself with good people, good things will happen. As we look at the cattle in the pens this year and the team standing behind them, we know that to be the absolute truth. Success in this industry isn't just about the genetics on paper; it's about the community, the mentorships, and the partnerships that help you reach the end goal.

To that end, we want to extend a massive thank you to all of our crew. In particular, a special thank you goes to John and Tammy Dolliver, Jordan Anderson, and Barry and Larissa Peril. As many of you know, my role as a feed sales rep with Country Junction Feeds often takes me away from the ranch. Whether it be the day-to-day operations, or on the show road, their dedication ensures that the daily standards of our operation never waver. We'd also like to thank Tyler, Claire, and the entire Stewart family and 777 Cattle crew. The Springside herd is currently being fed and housed at their place, and the exceptional condition of the offering is a direct result of their care and dedication. We are also thrilled to have KG Land and Cattle consigning again this year. Kale and Grace continue to be a shining example of the next generation of cattle producers, and we are proud to showcase their high-quality white bulls and commercial heifers alongside our own.

## OUR COMMITMENT TO THE FUTURE

While there has been some discussion over the past year regarding the future of our operation, we are pleased to clarify that Springside Cattle Co and our cow herd are staying right here in Alberta. We have decided that our roots are best left firmly planted on our home soil. This allows us to continue the hands-on management of our breeding program and ensure that the legacy we've built over the last 43 years continues to serve our local producers and community.

## JOIN US IN STETTLER

The livestock industry is currently full of energy, and with Char-cross calves continuing to top the market, there has never been a better time to invest in a "sure thing." Our goal remains the same: to provide a Bull for Every Budget without sacrificing the quality and integrity you've come to expect from Springside.

We invite you to join us at the Stettler Auction Mart to check out the offering and enjoy the hospitality. Whether you are looking for performance, calving ease, or maternal traits, these bulls are bred to perform and built to last. Thank you for your continued trust in our program and for allowing us to be a part of your success for over four decades.

We look forward to seeing you on February 12th!

Warm regards,

**Mike Panasiuk & the Springside Cattle Co Team**



SPRINGSIDE  
Cattle Co.  
~ Est. 1983 ~



SPRINGSIDE CATTLE CO.

Mike Panasiuk & Mike Craig

608 800 Yankee Valley Blvd. S.E. Airdrie, Alberta T4A 2L1  
250-832-8209

**WWW.SPRINGSIDECATTLE.COM**

# BULLS FOR EVERY BUDGET SALE DAY INFORMATION

## *Sale Staff*

Auctioneer: Dean Edge 403-704-0280

## *Ringside*

Andrew Releeder 403-848-1260  
Russell Allison 250-609-2083 or 250-319-3992  
Justin Gattey 403-963-1334

## *Sale Day Phones*

Mike Panasiuk 250-832-8209  
Kale Gist 403-741-7166  
Gary Rairdan 403-740-6823  
Barry Peril 204-801-3546  
Tyler Stewart 403-741-9571  
Tanner Madge 403-854-1011

## *Peterosa Exports*

Roger Peters 403-828-9815

## *Online viewing & bidding*

www.DLMS.ca  
Mark Shologan 780-699-5082

## *Insurance*

Larry Toner, Stockmans 306-834-7652

## *Sale Partners*

### **SPRINGSIDE CATTLE CO**

Mike Panasiuk and Mike Craig  
608 800 Yankee Valley Blvd SE  
Airdrie, AB T4A 2L1  
250-832-8209  
craig.michaeln@gmail.com  
www.springsidecattle.com

### **KG LAND & CATTLE**

Kale Gist & Grace Sorensen  
Box 46, Gadsby, AB, T0C 1K0  
403-741-7166  
kale\_gist@hotmail.com



**SEMEN RIGHTS** Consignors reserve the right to draw semen off any sale bull at the Buyer's convenience and the Seller's expense.

**SIGHT UNSEEN PURCHASE PROGRAM** Let us know what type of bull you are looking for, as well as a price range and we will do our best to purchase a bull on your behalf. If we cannot buy what you specify, we will not fill your order.

**TAKE HOME CREDIT** Take your bull(s) home sale day and we will deduct \$250 off the purchase price per bull OR give you a \$400 sales credit to the 2027 sale

Bull(s) picked up the week after the sale will receive a \$400 sales voucher to the 2027 sale.

### **KEEP AND FEED PROGRAM**

- All bulls will be delivered after the sale unless prior arrangements are made  
- Insurance is highly encouraged for bulls returning to the ranch  
Any buyers taking advantage of the "Take Home Sale Day Credit" will be responsible for picking their bull up from the auction mart or making alternate boarding arrangements with Gary Rairdan at the Stettler Auction Mart.

### **DELIVERY**

- Free delivery to central points in Western Canada  
- Springside will arrange trucking to Eastern Canada and share in trucking costs  
- US buyers take advantage of the weak Canadian Dollar. For cattle destined for USA or Mexico, \$1000 will be added to the purchase price to cover testing and border crossing fees.

# WANT TO VIEW THE BULLS PRIOR TO THE SALE?

The Springside Bulls will be available at **777 CATTLE** for viewing prior to the sale.

**Tyler Stewart: 403-741-9571**

## DIRECTIONS

- From Stettler, travel East on Highway 12 for 4 miles.
- Turn right (South) on Range Road 191, travel 4.5 miles.
- The farm is located on the West side of the road.

STETTLER

HIGHWAY 56

RANGE ROAD 191

TOWNSHIP ROAD 382

777 CATTLE  
SOS BULLS ARE HERE!



ONLINE FROZEN GENETICS SALE  
**SPRING STORM** check out  
**PAGE 55**

# TERMS AND CONDITIONS

**TERMS:** The terms of the sale are cash or cheque, payable at par to the sale clerks on sale day. No release of animals will be given until a satisfactory settlement has been made. We reserve the right to withhold animals for shipment for which payments have not been received.

**BIDDING:** Each animal will sell to the highest bidder. In the case of disputes, the auctioneer's decision shall be final.

**DISPUTES:** In case of changes to the information provided in this catalogue, announcements made from the auction block on sale day will take precedence over any printed material.

**LIABILITY:** All persons who attend the sale do so at their own risk. The owners, sale staff, and the Stettler Auction Mart assume no liability, legal or otherwise, for any accidents or injuries that may occur.

**HEALTH:** All bulls will have passed a comprehensive Breeding Soundness Evaluation (BSE) by a licensed veterinarian prior to the sale. Results will be available on the day of the sale.

**BREEDER'S GUARANTEE:** All animals sell with the standard breeder's guarantee. We guarantee to provide you with a sound breeding bull. Should any bull fail to be a satisfactory breeder, he may be returned to the seller's farm at the buyer's expense. The seller will have the right to trial the bull for a period of six months. If the bull is proven to be a non-breeder, the seller will offer a replacement bull of equal value or a credit toward the next year's sale. This guarantee does not cover injury, illness, or mismanagement.

**INSURANCE:** We strongly recommend that you insure your purchases. Ownership risk transfers to the buyer as soon as the hammer falls. An insurance representative will be available on-site at the settlement desk.

**ACCIDENTS:** Although every precaution is taken to ensure the safety of our guests, neither the owners nor the auction mart management can be held responsible for any accidents or loss of property.

**SIGHT UNSEEN PURCHASE PROGRAM:** For those unable to attend, we offer a Sight Unseen Purchase Program. Call Mike, Kale, or the sale staff ahead of time with your requirements, and we will act as your eyes in the pens. Your satisfaction is guaranteed upon delivery.

**REGISTRATION AND TRANSFER:** Registration papers will be transferred to the buyer by the seller after full settlement has been made.





*welcome* to the  
**BULL**  
DIVISION

**CHAROLAIS CATTLE ARE BUILT TO PERFORM FROM THE  
FEEDLOT RIGHT THROUGH  
TO THE RAIL.**

.....

Their growth, feed efficiency, and structural soundness make them easy to manage and consistent day in and day out. In the feedlot, they convert feed efficiently and maintain performance under a wide range of conditions. On the rail, Charolais stand out for their yield, muscle expression, and red meat yield, delivering carcasses that pack weight where it counts. Time and again, SOS or KG bulls prove their value by putting dollars back in the producer's pocket.



LOT 1 NITRO 506N



SOS 506N AB SELECT RESERVE CHAMPION



FARMFAIR

LOT 1 NITRO 506N



# SOS Nitro PLD 506N

PEMC909284 • Polled • SOS 506N • Jan. 18, 2025

Lot  
**1**

CE	BW	act WW	adj 205	EPDS	CE	BW	WW	YW	MM	MCE
★	101	905	819		13.2	-3.6	62	117	28	4.3

Sire  
LT RUSHMORE 8060 PLD  
**RBM KEYSTONE H41**  
RBM JASMINE F251

Dam  
ZKCC GAME ON 266Z  
**MISS PRAIRIE COVE 748E**  
MISS PRAIRIE COVE 407B

“ALL MEAT AND POTATOES...” were the words judge Jill Mader used to describe this bull calf in Edmonton. He has that unmistakable swagger that stops you in your tracks. Sired by the increasingly popular Keystone bull and out of a matriarch in our embryo program, Miss Prairie Cove 748E, this isn’t the first time she has produced the Lot 1 sale bull. Last year, his maternal brother, Matrix, was the high seller to Landaker Charolais. Four years ago, another maternal brother, SOS Kickstart 825K was the lead-off bull and high seller to Stepler Farms and went on to become Agribition Grand Champion Bull and BOSS Show Bull of the Year.

Right from a calf, 506N stood out. He has excelled with exceptional thickness, overall balance, and a fantastic disposition. 506N already boasts a successful show career: Junior Bull Calf Champion in Edmonton, Canadian National Class Winner in Regina, and Reserve Single Bull Calf Champion at the Alberta Select in Red Deer. SOS Nitro Pld 506N will play a huge role in the next chapter at Springside; we can’t wait to see who steps up to the plate on February 12!

**Selling 2/3 interest, full possession.**

CWA '25

LOT 2 NIGHTSHIFT 76N



SIRE SVY HISTORIC 241K



FULL SISTER

SOS 5202N



# SOS *Nightshift* PLD 76N

PEMC911191 • Polled • SOS 76N • Jan. 21, 2025

CE	BW	act WW	adj 205	EPDS	CE	BW	WW	YW	MM	MCE
★★★	101	851	783		17.1	-5.9	56	101	12	8.5

Lot 2

Sire **SVY HISTORIC 241K**  
M6 MS NEW GERMAINE 484 P

Dam **TMJF BERYLE 447B**  
TMJF U-CALLED 198U

A definite pen favorite and a bull you simply can't miss! If disposition, hair, thickness, and calving ease are a MUST for your program, then circle SOS Night Shift Pld 76N. He ranks in the top 2% of the breed for Calving Ease and Birth Weight EPDs and has his "big boy pants" on to get the job done. He is a maternal brother to the time-tested Apex bull, who continues to anchor the rancher aspect of every bull sale year after year. 76N is a calf you won't want to overlook on sale day.



# SOS *Nomad* PLD 149N

PEMC909285 • Polled • SOS 149N • Feb. 14, 2025

*S*  
*Lot*  
**3**

CE	BW	act WW	adj 205	EPDS	CE	BW	WW	YW	MM	MCE
★★	101	894	902		6.2	0.9	74	130	24	8.3

*Sire* OW MAXIMIZER 3041 PLD  
**KEYS POWERMAX 57G**  
 MISS KEY JERI 26E

*Dam* ZKCC GAME ON 266Z  
**MISS PRAIRIE COVE 748E**  
 MISS PRAIRIE COVE 407B

Nomad 149N is an outstanding son of Powermax with a powerful set of EPDs. He is a maternal brother to Lot 1 and is super expressive in his length, lower quarter, and head shape. His disposition is second to none, making him a favorite for anyone walking through the bull pen. This is a calf everyone will appreciate on sale day—a true “must-see” in person.

**Selling 3/4 interest, full possession.**



**DAM  
 PRAIRIE  
 COVE 748E**

MAT BROTHER

MLCC 11K



DAM M&L GOLDEN 11G



SIRE

ECHO SPRINGS BOUNTY



# SOS *Nailbiter* 153N

FMC911187 • Horned • SOS 153N • Feb. 23, 2025 • Full French

CE	BW	act WW	adj 205	EPDS	CE	BW	WW	YW	MM	MCE
★	102	788	828		-6.2	5.7	57	90	27	4.9

Lot 4

*Sire* PCFL CHIEFTAN 25X  
**ECHO SPRINGS BOUNTY 123B**  
ECHO SPRINGS WORTHWHILE 112W

*Dam* PCFL MAXIMILIAN 106G  
**M&L GOLDEN 11G**  
M&L XTRA11X

We have dabbled in the Full French business for a few years now, and SOS Nailbiter might be the best French bull we have produced to date. Exceptional ruggedness, thickness, a perfect set of feet and legs, and maternal power best describe this calf. Sired by the very popular Echo Springs Bounty bull (raised by the Briggs family in Ontario), his dam is none other than MLCC 11G. This Maximilian daughter was the high-selling lot at the MLCC dispersal and has more than proven her worth; her bull calf, MLCC Khan 11K, selling to Wilkie Charolais, at the very top of our 2023 "Bulls for Every Budget" sale. If that's not enough to convince you, make a point to drive to the ranch—we will proudly show you his outstanding two-year-old sister. Be ready to write a new chapter in the FULL FRENCH business with SOS Nailbiter 153N.

109N made a lot of friends in Red Deer when he and Lot 6 were named Reserve Champion Pair of Bulls at the Alberta Select. He exhibits explosive growth, incredible length, and a hairy coat that will have the auction mart fighting over his calves when they hit the sales ring or feedlot. Be sure to look this one up on sale day; he won't disappoint.



AB SELECT RESERVE PAIR OF BULLS  
LOT 5 & 6



## SOS *Normandie* 109N

PMC911208 • Polled • SOS 109N • Jan. 26, 2025



SOS APEX PLD 139F  
*Sire* **SOS KICKSTART PLD 825K**  
MISS PRAIRIE COVE 748E  
SVY GRIZZLY PLD 521C  
*Dam* **SOS RUMCHATA 71F**  
MXS DIANNE 715T

CE	BW	act WW	adj 205	CE	BW	WW	YW	MM	MCE
★	91	884	823	4.5	0.7	61	107	21	5.1

## SOS *Neutron* 12N

PMC911172 • Polled • SOS 12N • Jan. 03, 2025



PCC BOURBON 118J  
*Sire* **SOS LUXOR PLD 358L**  
SOS PRINCESS KATE 33Y  
SOS APEX PLD 139F  
*Dam* **SOS SHAZAM 34K**  
SOS SHAZAM 2H

CE	BW	act WW	adj 205	CE	BW	WW	YW	MM	MCE
★	102	920	863	1.4	1.9	71	126	20	3.2

The #2 performance calf at weaning, 12N leads off the first set of bulls to sell by SOS Luxor 358L. Luxor topped the 2024 bull sale, selling to Landaker Charolais, and has done an impressive job on his first calf crop. Rich in multi-generational SOS genetics, 12N is a true performance bull, ranking in the top 20% of the breed for both Weaning and Yearling weights. He was the other half of the "dynamic duo" selected as Reserve Champion Pair of Bulls at the 2025 Alberta Select. If you love them big and powerful, SOS Neutron 12N is your obvious first choice.



SIRE SOS LUXOR





## SOS *Nightwing* PLD 588N

PMC914791 • Polled • SOS 588N • Jan 23, 2025

Lot  
7

*Sire* BROBERGS RSOURCE D20  
**LT COUNTDOWN 9712 PLD**  
LT MADELINE 6113 PLD

*Dam* WIESES HIGH ROLLER 2H  
**SOS GISELLE 78L**  
WRANGLER MS GELIA 29D



DAM SOS GISELLE 78L

Incredible calving ease in this son of Countdown, our largest AI sire used in the heifer pen. He far exceeded our expectations—not only for calving ease but for vigor and above-average growth. It's worth mentioning that the Countdown females are equally impressive. 588N ranks in the top 20% of the breed for Calving Ease and Birth Weight and was raised by a tremendous, perfect-uddered Ledger granddaughter who will be in production for a long time. If calving ease is high on your priority list, check out SOS Rightwing 588N.

CE	BW	act WW	adj 205	CE	BW	WW	YW	MM	MCE
★★	92	805	818	9.9	-1.7	66	123	21	5.2



## SOS *Norway* 136N

PMC914794 • Polled • SOS 136N • Jan. 29, 2025

Lot  
8

*Sire* BROBERGS RSOURCE D20  
**LT COUNTDOWN 9712 PLD**  
LT MADELINE 6113 PLD

RBM FARGO Y111  
*Dam* **CEDARLEA RAZZLE 40L**  
CEDARLEA RAZZLE 65Z

CE	BW	act WW	adj 205	CE	BW	WW	YW	MM	MCE
★★	90	798	828	8.6	-1.2	66	124	21	3.4

Another highly predictable calving ease solution that will let you sleep at night. Norway 136N was raised by a heavy-milking Fargo daughter that was our pick from the Cedarlea Farms Female Sale in 2024. This calf has added hair, great testicles, and is the type you should entertain keeping females off of. Countdown is a heifer bull that saw heavy service again in 2025 at Springside, and 136N fits that same bill.

DAM

UDDER SOS JOAN 101L



DAM WITH LOT 9



GRANDSIRE

MAT GRANDSIRE HEFNER



# SOS *Namaste* PLD 574N

PMC913955 • Polled • SOS 574N • Jan 22, 2025

Lot 9

CE	BW	act WW	adj 205	EPDS	CE	BW	WW	YW	MM	MCE
★★★	81	872	875		13.8	-3.6	75	130	24	7.0

*Sire* BROBERGS RSOURCE D20  
**LT COUNTDOWN 9712 PLD**  
LT MADELINE 6113 PLD

*Dam* SOS HEFNER PLD 33H  
**SOS JOAN 101L**  
SOS JOANY 1G

A pasture and pen favorite that will command a lot of interest on sale day. 574N stems from one of the oldest cow families at SOS, and his two-year-old Hefner dam is as perfect-uddered as they come! SOS Namaste 574N stands on a perfect set of feet and legs, is hairy, and is probably the quietest calf in the pen. He boasts a tremendous set of EPDs and has the PRESENCE to command attention. A "double checkmark" kind of bull!



## SOS Nigel 580N

PMC917068 • Polled • SOS 580N • Jan. 23, 2025

Lot  
10

PCC BOURBON 118J  
Sire **SOS LUXOR PLD 358L**  
SOS PRINCESS KATE 33Y

BRIDOR FORTUNE MAKER 6F  
Dam **SOS WHITNEY 98K**  
SOS PINK LADY 34G

CE	BW	act WW	adj 205	CE	BW	WW	YW	MM	MCE
★	97	782	796	-2.8	2.9	67	111	20	1.0

Four generations polled, super haired, and well-balanced—these are the key points describing 580N. His dam comes from a very proven and predictable cow family noted for no-nonsense production and profitability. This is one of the top Luxor bulls in the sale; there is no better way to put consistency in a calf crop than by owning these bloodlines in volume.



## SOS Nelson 517N

PMC914773 • Polled • SOS 517N • Jan. 07, 2025

Lot  
11

PCC BOURBON 118J  
Sire **SOS LUXOR PLD 358L**  
SOS PRINCESS KATE 33Y

XAL DOUBLE HEADER 3D  
Dam **MEDONTE STARSTRUCK 10F**  
MICHELSON STARSTRUCK 532C

CE	BW	act WW	adj 205	CE	BW	WW	YW	MM	MCE
★★	75	785	690	8.6	-2.7	53	91	26	5.3

The dam of 517N has been one heck of a producer! XAL 10F has raised four herd bulls prior to this one, selling to: Lenn Rice (Ontario), Squaw Valley Ranch (Lumby, BC), Steve & Toni Smigelske (Yellowhead County), and last year's sales feature to Landaker Charolais. SOS Nelson 517N is the complete package—hairy, sound, moderate, and structurally correct. Another Luxor calf with the credentials to raise a set of market-topping steers.



## SOS Nectar 58N

PMC914780 • Polled • SOS 58N • Jan. 19, 2025

Lot  
12

PCC BOURBON 118J  
Sire **SOS LUXOR PLD 358L**  
SOS PRINCESS KATE 33Y

XAL EASY DOES IT 24E  
Dam **SOS STARLIGHT 83K**  
MEDONTE STARSTRUCK 4F

CE	BW	act WW	adj 205	CE	BW	WW	YW	MM	MCE
★	101	830	829	-2.5	2.9	58	106	25	0.7

A smooth-made, nice-headed, sound-footed bull with true herd bull presence. 58N has a lot of maternal merit in his pedigree; at +25 for Milk, he is exactly the type of bull you want to keep daughters from. We've already calved his two-year-old sister, and she is nothing short of spectacular.

## SOS *Niall* 158N

PMC911174 • Polled • SOS 158N • Feb. 28, 2025

Lot  
13

PCC BOURBON 118J  
Sire **SOS LUXOR PLD 358L**  
SOS PRINCESS KATE 33Y

KEYS ALL STATE 149X  
Dam **MEDONTE ALL STAR 14A**  
MEDONTE STARSTRUCK 17Y

CE	BW	act WW	adj 205	CE	BW	WW	YW	MM	MCE
★	95	740	800	-3.9	2.2	70	115	17	-0.7

We were fortunate enough to calve the 12-year-old dam of this outstanding prospect again in 2026! Fertility and longevity traits are highly valued here, and when a cow of this age is still getting 'er done, we hold her in very high regard. With great hair, a big barrel, and sound feet and legs, SOS Niall 158N truly deserves a second look on sale day.



## SOS *Nike* 530N

PMC914776 • Polled • SOS 530N • Jan. 17, 2025

Lot  
14

PCC BOURBON 118J  
Sire **SOS LUXOR PLD 358L**  
SOS PRINCESS KATE 33Y

CIRCLE CEE LEGEND 307A  
Dam **MEDONTE HALEY 20H**  
MEDONTE FANCY PANTS 2F

CE	BW	act WW	adj 205	CE	BW	WW	YW	MM	MCE
★	95	920	827	3.2	0.0	64	114	22	3.8

Tied for the #2 weaning weight, this Luxor calf is smooth-shouldered, small-headed, and has built-in calving ease. His dam is one of our heaviest-milking Circle Cee Legend cows, and we love her because she hits it out of the park every year. A maternal brother is currently working at Jim Leopard's, and we calved out an excellent two-year-old Ruger daughter from this dam. Highly maternal, yet pounds that pay, best describe SOS Nike 530N.



## SOS *Neville* 531N

MC917079 • Horned • SOS 531N • Jan. 29, 2025

Lot  
15

PCC BOURBON 118J  
Sire **SOS LUXOR PLD 358L**  
SOS PRINCESS KATE 33Y

ANCHOR ZEUS 13Z  
Dam **SOS FELICITY 132F**  
ANCHOR BELLE 3B

CE	BW	act WW	adj 205	CE	BW	WW	YW	MM	MCE
★	94	790	746	4.2	-1.0	57	105	20	2.7

531N is a thick and stylish bull who stands on a perfect set of feet and legs. His dam is one of those cows that quietly gets the job done year after year. This prospect will be a reliable worker for years to come—no nonsense, just results.





## SOS *Castor* 542N

PMC917080 • Polled • SOS 542N • Jan. 20, 2025

Lot  
16

SOS APEX PLD 139F  
Sire **SOS KICKSTART PLD 825K**  
MISS PRAIRIE COVE 748E

CWW DOUBLE TAKE 291D  
Dam **SOS CASTOR 107K**  
M&L MS CASTOR 94D

CE	BW	act WW	adj 205	CE	BW	WW	YW	MM	MCE
★	89	777	784	-0.6	2.9	65	114	20	3.4

A 1/2 French, long-bodied, and great-footed bull. We mated a group of off-age heifers to Kickstart for calving ease, and the results exceeded our expectations. SOS Castor 542N boasts a great weaning weight EPD; if you sell your calves in the fall, 542N deserves serious consideration.



## SOS *Novatel* 525N

PMC914775 • Polled • SOS 525N • Jan. 07, 2025

Lot  
17

SOS APEX PLD 139F  
Sire **SOS KICKSTART PLD 825K**  
MISS PRAIRIE COVE 748E

NOYER PP  
Dam **SOS NOVOTEL 126K**  
MAPLE LEAF MS MAJOR 528C

CE	BW	act WW	adj 205	CE	BW	WW	YW	MM	MCE
★	92	905	859	-1.0	2.3	66	117	14	3.3

Another 1/2 French Kickstart calf who possesses the huge weaning weight that French genetics are known for. His dam, a first-calf French female, is a big-framed, good-uddered, quiet cow with the look of productivity and longevity. If you're looking to add French influence, give Lot 17 a second look.



## SOS *Nightcap* 513N

PMC914772 • Polled • SOS 513N • Jan. 03, 2025

Lot  
18

SOS APEX PLD 139F  
Sire **SOS KICKSTART PLD 825K**  
MISS PRAIRIE COVE 748E

XAL COPY RIGHT 7C  
Dam **CIRCLE CEE DOTTIE 814F**  
LAE WILLOW 910W

CE	BW	act WW	adj 205	CE	BW	WW	YW	MM	MCE
★	102	871	746	-0.9	2.6	60	107	17	2.9

Every now and then you just need a "nightcap," and when you see SOS Nightcap 513N, you'll know what I mean. Great haired, solid-footed, and very long-bodied with extra performance. As an added bonus, 513N is as quiet as a puppy dog and very good-natured.

# SOS *Norman* 538N

MC914778 • Horned • SOS 538N • Jan. 18, 2025



Lot  
**19**

PCC BOURBON 118J  
*Sire* **SOS LUXOR PLD 358L**  
SOS PRINCESS KATE 33Y

SOS PANDEMIC 168H  
*Dam* **SOS LULU 52K**  
WOOD RIVER LULU SLICE 31X

CE	BW	act WW	adj 205	CE	BW	WW	YW	MM	MCE
★	104	820	818	1.2	1.6	65	112	22	2.3

We'd love to have 1,000 cows like the dam of 538N. She is developing into a front pasture female, and if she keeps producing like this, she will follow right in her mother's footsteps. Norman has the quality and style we all look for in a new herd bull—a bull we know will work in many rancher's pasture.

# SOS *Nifty* 130N

PMC911175 • Polled • SOS 130N • Jan. 30, 2025



Lot  
**20**

SOS APEX PLD 139F  
*Sire* **SOS KICKSTART PLD 825K**  
MISS PRAIRIE COVE 748E

BRIDOR FORTUNE MAKER 6F  
*Dam* **SOS INFINITY 185J**  
SOS JESSIE 82G

CE	BW	act WW	adj 205	CE	BW	WW	YW	MM	MCE
★	100	742	740	1.6	1.6	58	99	17	2.6

A full brother to 130N sold in last year's bull sale to Ernie Lee at Hanna, and this calf is built the exact same way. He is incredibly quiet, long-bodied, and very thick. I highly recommend putting a group of these Kickstart sons together—they are made right!

# SOS *Nickel* 566N

PMC914782 • Polled • SOS 566N • Jan. 22, 2025



Lot  
**21**

SOS APEX PLD 139F  
*Sire* **SOS KICKSTART PLD 825K**  
MISS PRAIRIE COVE 748E

BRIDOR FORTUNE MAKER 6F  
*Dam* **SOS MILKMAID PLD 223J**  
MXS NORTH STAR MAID 950G

CE	BW	act WW	adj 205	CE	BW	WW	YW	MM	MCE
★	99	790	763	0.0	2.2	69	112	17	3.4

An incredibly hairy bull that is smooth-shouldered, nice-headed, and long-bodied. His dam is a beautiful-tempered, perfectly uddered, and fertile Fortune Maker daughter.



## SOS *Nasdaq* 507N

PMC914771 • Polled • SOS 507N • Jan. 03, 2025

Lot  
22

LT LEDGER 0332 P

Sire **SOS APEX PLD 139F**

TMJF BERYLE 447B

BRCHE WHITE BEAR 8505 PLD ET

Dam **MEDONTE KARMA 6K**

CIRCLE CEE IMAGINE 812F

CE	BW	act WW	adj 205	CE	BW	WW	YW	MM	MCE
★	95	938	837	4.6	0.5	77	131	18	5.1

Every year, it is with great anticipation that we present the Apex sons, and SOS Nasdaq 507N is a real lead-off bull and feature for 2026! He is explosive in his growth, exhibits tremendous length, and checks all the boxes. He was the #1 performance calf at weaning and continues to excel in the feedlot. His dam is an excellent Medonte cow; a full brother was a high seller in our 2025 sale to Hays Stock Grazing Co-op Ltd. A bull designed for the top cattle producer's cowherd.



## SOS *Newman* 520N

PMC914774 • Polled • SOS 520N • Jan. 07, 2025

Lot  
23

LT LEDGER 0332 P

Sire **SOS APEX PLD 139F**

TMJF BERYLE 447B

SVY TRUST 6H

Dam **SOS FOUR ROSES PLD 339L**

SOS PEACHES 42B

CE	BW	act WW	adj 205	CE	BW	WW	YW	MM	MCE
★★	83	852	813	9.2	-1.5	69	128	15	8.1

Every year we successfully use Apex in the heifer pen for his extreme calving ease and vigor, and every year he delivers! Newman 520N fits that bill perfectly. He is a low birth weight bull with TREMENDOUS performance. Like all the Apex sons in the offering, this bull won't disappoint.



## SOS *Nirvanna* 543N

PMC914790 • Polled • SOS 543N • Feb. 09, 2025

Lot  
24

LT LEDGER 0332 P

Sire **SOS APEX PLD 139F**

TMJF BERYLE 447B

HVA FIREBALL 662F

Dam **SOS JESSIE 93L**

WIESE81S JESSIE 8J

CE	BW	act WW	adj 205	CE	BW	WW	YW	MM	MCE
★★★	88	662	730	10.7	-1.7	72	134	17	10

CALVING EASE SUPREME! 543N ranks in the top 20% of the breed for Calving Ease and Birth Weight EPDs. He was a low birth weight, early gestation calf—very smooth and small-headed. If you have a pen of heifers to breed, SOS Nirvanna 543N is a great choice.

# SOS Nabisco 503N

PMC914806 • Polled • SOS 503N • Jan. 02, 2025

Lot  
25

LT LEDGER 0332 P

Sire **SOS APEX PLD 139F**

TMJF BERYLE 447B

TURNBULLS DUTY-FREE 358D

Dam **SOS LUFFA 780L**

STEPPLER MISS 144Z

CE	BW	act WW	adj 205	CE	BW	WW	YW	MM	MCE
★★★	77	724	692	8.9	-1.8	70	135	16	4.6

Another great calf off Apex. We are really impressed with how our two-year-olds produced for us in 2025, and 503N ranks among the top for both calving ease and performance. The magical cross of Duty Free and Apex strikes again! SOS Nabisco 503N is in the top 20% of the breed for Birth Weight, Calving Ease, Weaning Weight, and Yearling Weight. A young bull that checks all the boxes, raised by a two-year-old dam.



# SOS Ninja 546N

PMC917070 • Polled • SOS 546N • Jan. 20, 2025

Lot  
26

LT LEDGER 0332 P

Sire **SOS APEX PLD 139F**

TMJF BERYLE 447B

TURNBULLS DUTY-FREE 358D

Dam **SOS JEMMA 31L**

SOS JEMIMA 108G

CE	BW	act WW	adj 205	CE	BW	WW	YW	MM	MCE
★★	89	869	866	7.5	-0.6	74	140	17	7.1

A tremendous offering from first-time mom 31L. The Duty Free X Apex cross has always been explosive for us; he ranks in the top 5% of the breed for Yearling Weight. 546N has it all: thickness, disposition, performance, and great feet and legs. SOS Ninja 546N is worth a second look on sale day.



# SOS Nugget 532N

PMC914777 • Polled • SOS 532N • Jan. 17, 2025

Lot  
27

LT LEDGER 0332 P

Sire **SOS APEX PLD 139F**

TMJF BERYLE 447B

DF MR OUTRAGEOUS 64G

Dam **SOS MARVEL 74L**

MEDONTE WONDERSTRUCK 4E

CE	BW	act WW	adj 205	CE	BW	WW	YW	MM	MCE
★★★	70	726	728	14.3	-4.1	64	115	21	9.4

Check out the birth weight on this hairy, stout, and moderate Apex HEIFER BULL. SOS Nugget 532N will be a heifer bull highlight on February 12. He ranks in the top 5% of the breed for both Birth Weight and Calving Ease, yet still exhibits decent growth. Take advantage of breeding your red heifers to white bulls to command a premium on the buckskin market!





## SOS *Namir* 5106N

PMC911207 • Polled • SOS 5106N • Jan. 25, 2025

Lot  
28

PRO-CHAR WILSON 2J  
Sire **HWY LEGEND 23L**  
SOS MARVEL PLD 154J

BRCHE WHITE BEAR 8505 PLD ET  
Dam **SOS LALA RI PLD 301L**  
SOS JESSICAH 34B

CE	BW	act WW	adj 205	CE	BW	WW	YW	MM	MCE
★★★	82	754	775	14.8	-3.5	55	96	19	8.2

Ranking in the top 4% for Calving Ease with a score of 14.8. Highway Legend 232 is the new heifer bull here at Springside and Landaker; in his first calf crop, he was 100% unassisted on all the heifers he bred. Legend 23L was our pick and a sales feature at the Highway 21 Bull Sale, and all early indications show he will exceed expectations as a true heifer bull. At a -5.1 Birth Weight EPD and 17.4 Calving Ease score, he ranks in the top 1% and 3% of the breed respectively. If you have a lot of heifers to breed, use him with no hesitation!



## SOS *Navigator* 554N

PMC911963 • Polled • SOS 554N • Jan. 20, 2025

Lot  
29

PRO-CHAR WILSON 2J  
Sire **HWY LEGEND 23L**  
SOS MARVEL PLD 154J

WGD RUGER 8J  
Dam **SOS BERYL PLD 398L**  
TMJF BERYLE 447B

CE	BW	act WW	adj 205	CE	BW	WW	YW	MM	MCE
★★★	87	715	727	11.7	-4.7	57	101	6	2.9

Generations of calving ease are stacked in this guy's pedigree! SOS Navigator 554N was raised by an outstanding two-year-old Ruger daughter. This low birth weight, calving ease option will suit a group of first-calf heifers and offers loads of hair and great vigor to his offspring. His dam is a full sister to KG Revolver, the 2024 lead-off bull sold to Madge Farms. Quality runs deep here.



## SOS *Nixon* PLD 541N

PMC914779 • Polled • SOS 541N • Jan. 19, 2025

Lot  
30

PRO-CHAR WILSON 2J  
Sire **HWY LEGEND 23L**  
SOS MARVEL PLD 154J

BRCHE WHITE BEAR 8505 PLD ET  
Dam **SOS LEMON DROP 99L**  
MEDONTE DONT TOUCH ME 6D

CE	BW	act WW	adj 205	CE	BW	WW	YW	MM	MCE
★★★	88	826	823	13.1	-2.9	57	104	23	8.0

The last of the Hwy Legend sons in this year's offering and one you'll want to circle! Raised by a tremendous, moderate White Bear daughter, Nixon 541N is a top-tier heifer bull option, ranking in the top 10% for Calving Ease and Birth Weight. Worth noting is his impressive 826 lb weaning weight in early September. If you like them smooth and good-footed, 541N is a first choice.

# SOS *Nantucket* 561N

PMC914781 • Polled • SOS 561N • Jan. 21, 2025



Lot  
**31**

CCC WC REDEMPTION 7143 PLD ET  
*Sire* **PCC BOURBON 118J**

BRCHE BERKLY ANN 8507 PLD ET

WINN MANS CHAVEZ 826Y  
*Dam* **SOS GISELLE 73G**

SOS FRENCH KISS PLD 172E

CE	BW	act WW	adj 205	CE	BW	WW	YW	MM	MCE
★	94	756	693	7.5	0.1	64	111	23	6.0

The PCC Bourbon bull really piqued our interest, and now that we are calving Bourbon daughters, we are even more excited. This calf is another PEN FAVORITE! He has a tremendous disposition, exceptional hair, and is backed by an awesome cow family. Whether you are selling steers in the fall or keeping buckskin replacements, 561N is one to watch.

# SOS *Nickolai* PLD 152N

PMC911204 • Polled • SOS 152N • Feb. 14, 2025



Lot  
**32**

CCC WC REDEMPTION 7143 PLD ET  
*Sire* **PCC BOURBON 118J**

BRCHE BERKLY ANN 8507 PLD ET

BRIDOR FORTUNE MAKER 6F  
*Dam* **SOS ANGEL 242J**

MXS ALLEY 827F

CE	BW	act WW	adj 205	CE	BW	WW	YW	MM	MCE
★	93	789	833	6.3	0.1	65	102	20	5.6

152N has incredible length, depth, and a tremendous disposition. His dam, 242J, is a FRONT PASTURE FEMALE who does a great job every year. This will be the last of the Bourbon sons on offer, and SOS Nickolai 152N is sure to have many friends on sale day.

# SOS *Nintendo* 570N

Applied For • Polled • SOS 570N • Jan. 22, 2025



Lot  
**33**

SOS TIMBER PLD 88J  
*Sire* **SOS LUMBERJACK PLD 42L**

MEDONTE EMOTIONS 16F

ELDERS CHANCELLOR 8019F  
*Dam* **SOS ESMERALDA 174J**

MXS ESMERALDA 261Z

CE	BW	act WW	adj 205	CE	BW	WW	YW	MM	MCE
★★	100	845	814	4.7	1.2	66	114	14	5.4

Lumberjack topped our 2024 bull sale, selling to Bina Charolais in North Dakota. We used him in our program and got only one bull calf, but he's a good one! 570N exhibits tremendous testicle development, a great set of feet and legs, and is very easy-fleshing. You will definitely find this bull at the front of the offering this year.



SIRE SOS LUMBERJACK 42L



## SOS *Nolan* 144N

PMC911181 • Polled • SOS 144N • Feb. 18, 2025

Lot  
34

*Sire* PLEASANTDAWN CLASSIC 707C  
**SOS GRANITE PLD 8G**  
 STEPLER MISS 352Y  
 SPARROWS LANDMARK 963W  
*Dam* **MXS MADISON 509C**  
 MXS MADISON 732T



MAT BROTHER SOS 28L



MAT SISTER SOS 104G



DAM MXS MADISON 509C

CE	BW	act WW	adj 205	CE	BW	WW	YW	MM	MCE
★	104	769	795	-0.1	2.8	47	101	26	5.7

MXS 509C does it again! She has been one of the most productive cows in our herd. This is her fifth bull calf to make the sale, and he is every bit as good as the four before him. This Granite calf is a younger February bull but has plenty of size for his age; he's a bull you will like even more the older he gets.



## SOS *Nissan* 526N

PMC914793 • Polled • SOS 526N • Jan. 29, 2025

Lot  
35

*Sire* CEDARDALE ZEAL 125Z  
**BRIDOR FORTUNE MAKER 6F**  
 BRIDOR YARDENA 25Y  
 ELDERS CHANCELLOR 8019F  
*Dam* **SOS MATILDA 33J**  
 ANCHOR XERA 3X

CE	BW	act WW	adj 205	CE	BW	WW	YW	MM	MCE
★★	94	815	785	8.9	-1.0	70	106	19	8.4

The last Fortune Maker bull calf to sell and one we really admire. SOS Nissan 526N has a negative Birth Weight EPD paired with rock-solid performance. We admire our Fortune Maker calves for their excellent disposition, fertility, and calving ease—not to mention the daughters are some of the best young cows in our herd.

## SOS *Neon* 563N

MC917088 • Horned • SOS 563N • Jan. 21, 2025

Lot  
36

RGP REMINGTON 101Y  
Sire **HTA DEFENDER 846F**  
HTA HOT STUFF 349A

RHH WHITEHOT MOROCCO 73X  
Dam **BOBS SCANDAL 177E**  
FVSF MS ICE 43B

CE	BW	act WW	adj 205	CE	BW	WW	YW	MM	MCE
★	105	918	839	2.3	1.9	51	99	25	8.3

BIG TIME PERFORMANCE! This calf has herd bull written all over him. He is incredibly hairy, as long as a freight train, and has an awesome set of feet and legs. If you sell your calves by the pound, SOS 563N is worth noting on sale day.



## SOS *Nash* 550N

PMC917082 • Polled • SOS 550N • Jan. 20, 2025

Lot  
37

RGP REMINGTON 101Y  
Sire **HTA DEFENDER 846F**  
HTA HOT STUFF 349A

TRI-N GO NORTH 2411H  
Dam **BOBS FLASH DANCE 23K**  
SOS BOOTYLICIOUS 8D

CE	BW	act WW	adj 205	CE	BW	WW	YW	MM	MCE
★	92	835	836	1.1	2.0	55	112	23	7.8

A calf destined to cover a lot of cows in a big range or community pasture. Not every bull is a pet, but 550N is very well-mannered and respectful. We appreciate him for his incredible length and testicle development.



## Vaccination Protocol

WE ARE UTILIZING FUSOGARD FOR ALL SALE BULLS,  
a vaccine for the prevention of footrot

## SOS *No Frills* 533N

PMC917084 • Polled • SOS 533N • Jan. 17, 2025

Lot  
38

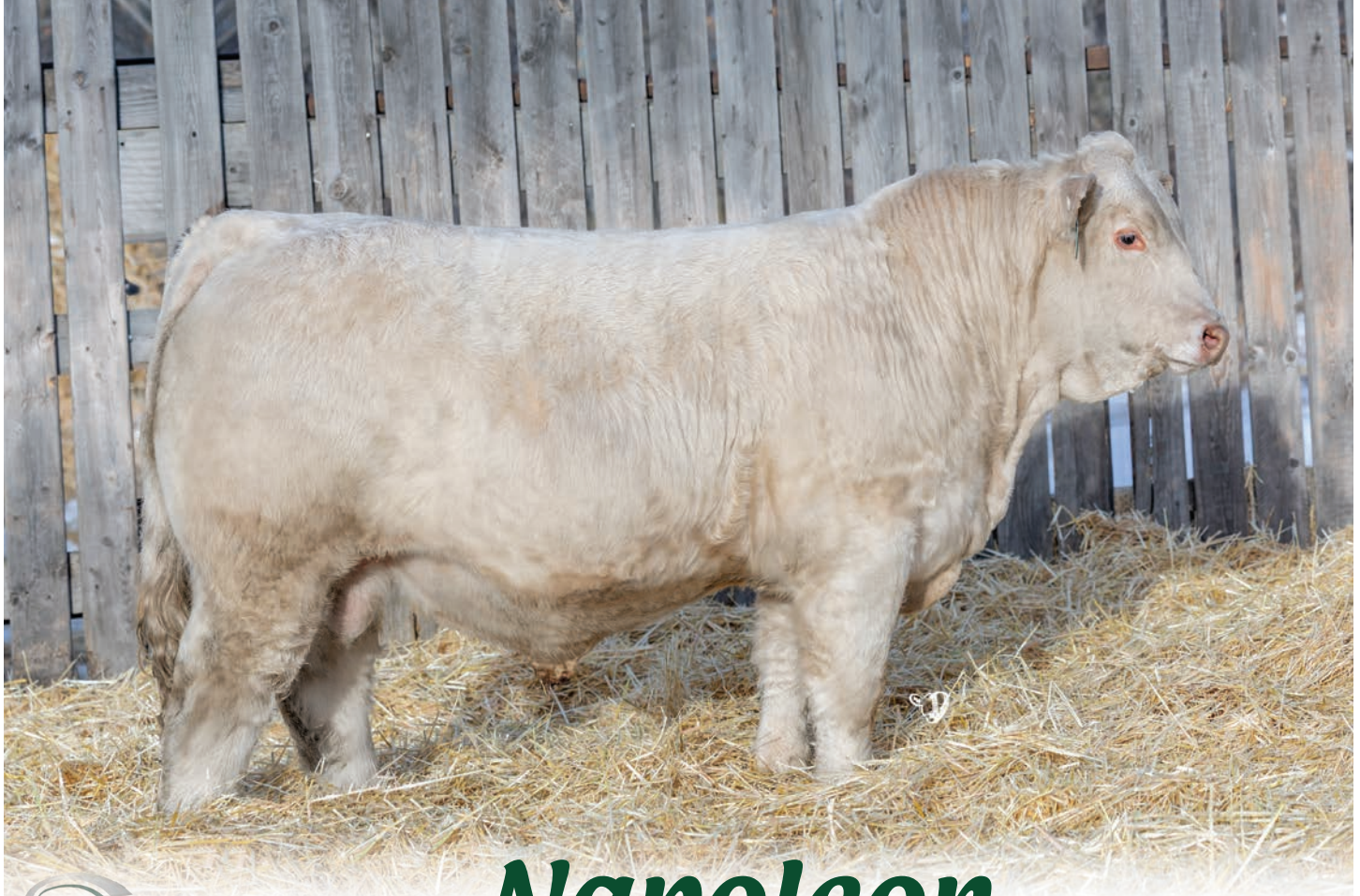
LT AUTHORITY 7229 PLD  
Sire **LT BADGE 9184 PLD**  
LT MADALYNN 6108 PLD

SOS TIMBER PLD 88J  
Dam **SOS FERN 91L**  
SOS FRENCH KISS 94H

CE	BW	act WW	adj 205	CE	BW	WW	YW	MM	MCE
★★★	76	818	810	9.9	-0.5	68	121	22	6.2

Heading into the calving ease section, we are excited for the future of this Badge calf. He has an exceptionally strong set of EPDs and was raised by a first-calf heifer to boot. This bull calf has already garnered a lot of attention all fall and winter—expect the same on February 12.





# SOS *Napoleon* 505N

PMC914770 • Polled • SOS 505N • Feb. 18, 2025

Lot  
39

CE	BW	act WW	adj 205	EPDS	CE	BW	WW	YW	MM	MCE
★	89	905	807		2.4	0.8	54	100	26	8.6

*Sire* TURNBULLS DUTY-FREE 358D  
**SOS JACKPOT PLD 158J**  
MXS EVERLY 816F

*Dam* MISTER PP  
**M&L JADE 11J**  
M&L XTRA11X

The only Jackpot son in this year's offering, and he is worth a second look! This HALF FRENCH calf is a pasture favorite and has excelled in the feedlot as well. 505N carries a lot of natural muscling and thickness.



# SOS *Nutmeg* 589N

QMC914792 • Horned • SOS 589N • Jan. 24, 2025

Lot  
40

*Sire* TURNBULLS DUTY-FREE 358D  
**SOS LEGACY PLD 39L**  
SOS FUSCHIA PLD 109F  
*Dam* WINN MANS CHAVEZ 826Y  
**SOS GINGER 29G**  
ANCHOR WHIMSY 15W

CE	BW	act WW	adj 205	CE	BW	WW	YW	MM	MCE
★	92	862	797	7.0	0.1	71	132	16	5.9



SIRE SOS LEGACY 39L

This cherry-red Charolais calf is one that will maintain a red coat on many British-type cows while adding that signature Charolais performance. We're always looking for a few tan bulls for the sale, but it turns out this double-red calf came out dark. He is homozygous red—but also homozygous good!

## Lot 41

Incredible length in this Chavez calf, raised by a very nice two-year-old BOB heifer. He might not be the prettiest herdsire prospect, but he will go out, breed cows, and sire a tremendous set of steers.



## SOS *Newsworthy* 15N

PMC917085 • Polled • SOS 15N • Jan. 03, 2025



*Sire* WINN MANS CHAVEZ 826Y  
**SOS HOME GROWN 15C**  
SOS SPRINGSIDES ADELE167

*Dam* RGP HEAVY DUTY 33H  
**BOBS LACIE 37L**  
SOS HATTIE 41H

CE	BW	act WW	adj 205	CE	BW	WW	YW	MM	MCE
★★	82	805	763	-1.2	0.9	66	122	19	1.6

## SOS *National* PLD 23N

PMC911195 • Polled • SOS 23N • Jan. 07, 2025



*Sire* SOS APEX PLD 139F  
**SOS KICKSTART PLD 825K**  
MISS PRAIRIE COVE 748E

*Dam* WC BENELLI 2134 P ET  
**MEDONTE DUSTY 11D**  
GERRARD DUSTY 16Y

CE	BW	act WW	adj 205	CE	BW	WW	YW	MM	MCE
★	93	836	734	5.6	0.1	58	107	16	5.3

This great-haired calf exhibits tremendous thickness and excellent feet and legs. He has longevity built into his pedigree, coming from a strong 10-year-old cow.

## Stettler Auction Mart

"SAM" - THE STRONGEST CHAROLAIS MARKET IN WESTERN CANADA

**OUR GOAL IS TO ENSURE THAT YOU SELL TOP DOLLAR CALVES  
MAXIMIZING OUR QUALITY BULL POWER**

The Stettler Auction Mart has the marketing options to make that happen including....

One owner presort sales in the sale ring or live in-house video sales

### LISTING AGENTS FOR...

TEAM Electronics, Weekly Friday Video Sale  
and Southern Alberta Livestock Exchange, Specialty video sales  
Chain Lakes Yearling Sale (August)

Western Canadian Fall Classic Calf Sale (September)  
S.A.L.E. Special Spring Video Sales monthly from January To March

**Stettler Auction Mart 2016 Ltd.**  
Box 1238, 4305 52 Ave, Stettler, AB T0C 2L0  
sam1990@telusplanet.net www.stettlerauction.ab.ca  
Gary Raidan: 403-740-6823



Proudly providing nutrition solutions to Alberta beef producers for the last 6 decades

Premium nutrition to complement premium genetics

Country Junction Feeds maintains a complete line of cattle feed trusted at top Ranches across Alberta



(780) 352-9155

www.countryjunctionfeeds.com

FULL BROTHER

SOS 344L



DAM SOS PRINCESS KATE 33Y



SIRE

PCC BOURBON 118J



# SOS KG *Jim Beam* PLD 391L

PEMC862363 • Polled • SOS 391L • Jan. 16, 2023

CE	BW	act WW	adj 205	EPDS	CE	BW	WW	YW	MM	MCE
★	87	891	854		3.2	1.5	61	103	23	5.1

Lot 43

Sire CCC WC REDEMPTION 7143 PLD ET  
**PCC BOURBON 118J**  
BRCHE BERKLY ANN 8507 PLD ET

Dam SDC KING RANCH 70T  
**SOS PRINCESS KATE 33Y**  
SOS JESSICA 1150S

Producing genetics like 391L is what we all strive for. Jim Beam is as long as he is deep and wide. After two successful breeding seasons, we are proud to offer this excellent breeding machine with many years of service ahead of him. He is another great son of 33Y and comes from one of our most successful flushes to Bourbon. If you have a lot of cows to breed, SOS KG Jim Beam 391L is the perfect choice!

## Maternal Brothers

Lots 43-47

WE WANT TO EXTEND A MASSIVE  
**THANK YOU TO OUR CREW!**

---



**JOHN & TAMMY DOLLIVER**



**JORDAN ANDERSON**



**BARRY PERIL**

# Welcome from KG LAND & CATTLE

**What a roller coaster of a year—some of the lowest lows, but without a doubt, some of the highest highs as well.**

This past November, I lost both my Grandma Ruby and my Uncle Randy—two people who played an instrumental role in my upbringing and my passion for the cattle industry. Their love for cattle was second to none. My uncle, in particular, had an incredible eye for stock and a memory for pedigrees that I always admired. He never missed one of our bull sales and was one of our biggest supporters. Just a month later, standing in the ring at the Albert Select with the People's Choice Bull and Champion Pair of Bulls was something I never could have imagined. I know he was looking down on us, smiling.

This year, the bull calves were grassed just a couple of miles from home on a half section that was cross-fenced and rotated every 3–5 days. I truly believe this management played a big role in our weaning weights. Good grass and good water made all the difference during the grazing season.

Once home, the bulls were put back on a TMR ration consisting of barley silage, oat silage, hay, and a Country Junction supplement pellet designed to support rumen and gut health. We continue to feed a higher-forage diet, working closely with both Country Junction and Blue Rock to ensure a balanced ration that allows these bulls to develop safely and go out and work for our customers. James does a hell of a job all winter keeping the bulls and cows fed—we're very lucky to have him on our team.

One cool note about this year's offering: every bull in the sale is tie-broke. We have pail-fed the bulls right from weaning, and when I say "we," I mean Grace and Greg. The bull pen is extremely quiet and easy to work with. We don't do wild.

I'm incredibly excited to showcase this set of bulls—only four years in. Starting with just 10 cows, we've finally been able to breed a larger group, allowing us to build smaller sire groups. I think that consistency really shows throughout the bull pen. We are always around if your ever wanting to come tour our bull pen or the cow herd.

## KG LAND & CATTLE

Kale Gist & Grace Sorensen  
Box 46, Gadsby, AB, T0C 1K0  
403-741-7166  
kale\_gist@hotmail.com



The bulls and heifers are all on the same vaccination program, following the Bovishield protocol. We work closely with Maverick Vet Clinic to ensure everything is up to date. The heifers are also developed on a high-forage TMR, the heifer were all palpitated to ensure everything is right. I'd love to keep every one of these females—they're out of hard-working mother cows, and we've been heavily focused on feet and udders when selecting bulls for our commercial herd. There's no better time to be in the cattle industry, and I truly believe these females would fit into anyone's program and make you money.

The opportunity to lease the TF cows has taken our cow herd to the next level. Knowing the quality of cows Brian selected—and many I wish I had—made the decision an easy one. We sincerely appreciate Brian and his family for giving us this opportunity.

As we head into our fourth bull sale, a huge thank you to Mike and Michael for letting us tag along, mentoring us, and sharing so much knowledge about this industry. We appreciate your patience and words of wisdom as we continue to learn. Being able to showcase our bulls alongside yours at the Select is something I'll never forget.

### Kale Gist





## Calving Ease Scores

If it's your first time buying Charolais bulls or calving ease is your number one priority, then this calving ease score is a valuable tool. We've analyzed every bull from a **CALVING EASE ONLY PERSPECTIVE** and identified bulls that we are confident will work for you. We've not only looked at their birth weights but taken into account their sires & dams' individual history and made sure that the front shoulder is laid in flat and that they have a smaller than average head. Let's face it, some cows just have smaller than average calves at birth and

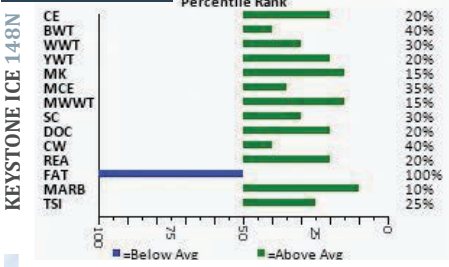
they forward that trait to their sons. We know the cows and the families that can be consistently counted on to deliver. This is not a ranking of the best bulls in the sale, but rather a selection that will deliver from a calving ease perspective.

### CALVING EASE SCORES

- ★ MATURE COWS ONLY
- ★★ COWS/MATURE HEIFERS
- ★★★ HEIFER APPROVED



**EPD CHART**



**AB SELECT CHAMPION PEOPLES CHOICE**



**SIRE**



**RMB KEYSTONE H41**



# KG/SOS *Keystone Ice* ET 148N

PEMC904643 • Polled • KG 148N • Jan. 01, 2025



CE	BW	act WW	adj 205	EPDS	CE	BW	WW	YW	MM	MCE
★	100	990	842		10.2	-0.3	66	127	29	7.6

*Sire* LT RUSHMORE 8060 PLD  
**RMB KEYSTONE H41**  
 RBM JASMINE F251

*Dam* SDC KING RANCH 70T  
**SOS PRINCESS KATE 33Y**  
 SOS JESSICA 1150S

A bull we call Ice. I may have dropped the ball by not taking him out and campaigning him this fall. My pen favorite—this bull is hard to fault: big middled, soft sided, wide topped, and big quartered. Probably the easiest bull to halter break, always looking for a scratch or a brush. Excellent disposition, backed by the 33Y donor cow. Named People's Choice Bull at the Alberta Select and part of the Champion Pair of Bulls. These Keystone calves are flat-out good—he's worth the drive to see in person. PA free. **Selling 3/4 interest, full possession.**

**Owned with Springside Cattle Co.**

BROTHER

KG 1K



DAM SOS PRINCESS KATE 33Y



BROTHER

SOS LUXOR 358L



# KG *Nickelback* ET 313N

PEMC904644 • Homo Polled • KG 313N • Jan. 02, 2025

CE	BW	act WW	adj 205	EPDS	CE	BW	WW	YW	MM	MCE
★★	81	900	768		9.3	-0.7	58	113	12	8.7



Lot  
45

*Sire* LT LEDGER 0332 P  
**SOS APEX PLD 139F**  
TMJF BERYLE 447B

*Dam* SDC KING RANCH 70T  
**SOS PRINCESS KATE 33Y**  
SOS JESSICA 1150S

A bull with true breeder potential. Born small with a moderate 81 lb birthweight, then exploded with growth like the Apex calves do. He would work well on large-framed heifers or young cows. Apex left his mark on the industry, and I feel 313N could follow in his sire's footsteps. Homo polled, PA free.

**Selling 3/4 interest, full possession.**



## Full Brothers

If it's not broken, why fix it? This cross is a never-miss. I bought three embryos out of the National Trust Sale off Mike, hoping for heifers—bulls it was, but two very good ones. These bulls pack punch and will compliment any commercial herd. 225N is Grace's pen pet, likely the quietest calf in the pen and always looking for a scratch. He is horned; his brother is smooth polled.

### KG *Novelty* ET 225N

EMC904640 • Horned • KG 225N • Jan. 01, 2025

Lot  
46

MERIT 7329T  
*Sire* **WINN MANS CHAVEZ 826Y**  
WINN MANS BREATHLESS 826U

SDC KING RANCH 70T  
*Dam* **SOS PRINCESS KATE 33Y**  
SOS JESSICA 1150S

CE	BW	act WW	adj 205	CE	BW	WW	YW	MM	MCE
★	99	996	847	1.9	2.5	54	98	16	1.2

### KG *Nordeeg* ET 303N

PEMC904641 • Polled • KG 303N • Jan. 01, 2025

Lot  
47

MERIT 7329T  
*Sire* **WINN MANS CHAVEZ 826Y**  
WINN MANS BREATHLESS 826U

SDC KING RANCH 70T  
*Dam* **SOS PRINCESS KATE 33Y**  
SOS JESSICA 1150S

CE	BW	act WW	adj 205	CE	BW	WW	YW	MM	MCE
★	92	906	772	1.0	2.7	54	100	15	1.6



SIRE WINN MANS CHAVEZ 826Y



LOT 43 - BROTHER JIM BEAM 391L

DAM

SOS SUPER NOVA 62G



PAIR OF BULLS AB SELECT 2025



SIRE

SOS KICKSTART 825K



# KG *Restart* 152N

PMC914210 • Polled • KG 152N • Jan. 22, 2025



Lot 48

CE	BW	act WW	adj 205	EPDS	CE	BW	WW	YW	MM	MCE
★	104	860	797		2.6	2.1	63	113	16	6.5

SOS APEX PLD 139F  
*Sire* **SOS KICKSTART PLD 825K**  
 MISS PRAIRIE COVE 748E

SOS CHUCK WAGON 54C  
*Dam* **SOS SUPER NOVA 62G**  
 ALT TOVA 22X

Kickstart calves continue to gain a following. Exceptional growth, awesome hair, wide topped, and big hiped. Which is what 152N exemplifies perfectly. With Chuckwagon on the bottom side of his pedigree he's loaded with potential! And he's already proving this, being apart of the Champion Pair of Bulls at the Alberta Select alongside KG 148N. **Selling 3/4 interest, full possession.**

Owned with TF Cattle Co.

GRANDSIRE

SOS APEX PLD 139F



DAM REESE GEORGINA 127G



# KG *Head Start* 141N

PMC912667 • Polled • KG 141N • Jan. 16, 2025



CE	BW	act WW	adj 205	EPDS	CE	BW	WW	YW	MM	MCE
★	100	920	822		1.8	1.6	67	115	13	2.5

Sire **SOS KICKSTART PLD 825K**  
MISS PRAIRIE COVE 748E

Dam **REESE GEORGINA 127G**  
MLW LOVESTORY POLLED 133W

HAIR, HAIR, HAIR! One of the Kickstart bulls we showcased at Alberta Select. Backed by a very nice Black Jack mother. A bull I loved watching all summer—he changed by the day. Wide topped, big hipped, heavy haired—every rancher’s dream.

Another bull always looking for a scratch. These Kickstart sons are peas in a pod—moderate birthweights with strong weaning weights. Buyers love hairy calves through the sale ring—don't miss this one.



DAM FAUNA RGCG 159H

## KG *False Start* 156N

PMC912668 • Polled • KG 156N • Jan. 24, 2025



SOS APEX PLD 139F  
*Sire* **SOS KICKSTART PLD 825K**  
 MISS PRAIRIE COVE 748E  
 GERRARD CLEVELAND 24E  
*Dam* **G.BROS FAUNA RGCG 159H**  
 G.BROS FAIR RGCG 875F

CE	BW	act WW	adj 205	CE	BW	WW	YW	MM	MCE
★	93	852	800	0.0	0.8	64	111	18	4.1

## KG *Nash* 95N

PMC907451 • Polled • KG 95N • Jan. 03, 2025



SOS APEX PLD 139F  
*Sire* **SOS KICKSTART PLD 825K**  
 MISS PRAIRIE COVE 748E  
 DCR MR SILVER GUN E516  
*Dam* **WRANGLER MS AMBER 39J**  
 GERRARD AMBER 6Y

CE	BW	act WW	adj 205	CE	BW	WW	YW	MM	MCE
★	103	778	702	1.5	2.5	62	113	15	5.1

A nicely made Kickstart bull out of a moderate, young cow we bought from the Wrangler dispersal. I'd love to have a whole pen of Kickstart bulls to sell—imagine the set of steer calves you'd have.



FULL BROTHER

SOS KG REVOLVER 366L



DAM TMJF BERYLE 447B



SIRE

WGD RUGER 8J



# KG *Nine MM* ET 38N

PEMC904977 • Homo Polled • KG 38N • Jan. 04, 2025



CE	BW	act WW	adj 205	EPDS	CE	BW	WW	YW	MM	MCE
★	100	951	817		1.3	1.1	76	132	2	9.2

*Sire* LT RANSOM 8644  
**WGD RUGER 8J**  
WGD THE CRUSH 14D

*Dam* MERIT ROUNDUP 9508W  
**TMJF BERYLE 447B**  
TMJF U-CALLED 198U

# Full Brothers

**38N & 117N** Two rugged flush mates loaded with power and performance. These bulls will add hair and pounds to your calf crop. A full brother is working at Madge Farms, and we have full sisters that are in production and are just as good as the bulls! Homo polled, PA free.



## KG *All Nighter* ET 117N

PEMC904647 • Homo Polled • KG 117N • Jan. 03, 2025

CE	BW	act WW	adj 205	EPDS	CE	BW	WW	YW	MM	MCE
★	109	953	817		-2.3	1.7	69	130	5	-1.0



Sire **WGD RUGER 8J**  
 LT RANSOM 8644  
 WGD THE CRUSH 14D

Dam **TMJF BERYLE 447B**  
 MERIT ROUNDUP 9508W  
 TMJF U-CALLED 198U



# KG Estrada ET 88N

PEMC905202 • Homo Polled • KG 88N • Jan. 23, 2025



CE	BW	act WW	adj 205	EPDS	CE	BW	WW	YW	MM	MCE
★	105	925	855		10.6	-3.9	70	132	14	6.8

*Sire* PLEASANT DAWN CHISUM 216A  
**JSR ESTRADA 52E**  
 JSR JASMINE 167C

*Dam* MERIT ROUNDUP 9508W  
**TMJF BERYLE 447B**  
 TMJF U-CALLED 198U

Another 447B son out of Estrada. One of the longest-bodied, thickest bulls in the pen, with a big weaning weight and improving every day. His full sister sold at Alberta Select to GR Simmentals & Charolais. Homo polled, PA free. **Selling 3/4 interest, full possession.**



# KG Navigate ET 215N

PEMC904976 • Homo Polled • KG 215N • Jan. 04, 2025



*Sire* LT COUNTDOWN 9712 PLD  
**SVY HISTORIC 241K**  
 M6 MS NEW GERMAINE 484 P  
 MERIT ROUNDUP 9508W  
*Dam* **TMJF BERYLE 447B**  
 TMJF U-CALLED 198U

CE	BW	act WW	adj 205	CE	BW	WW	YW	MM	MCE
★★★	84	867	746	14.6	-4.3	62	123	11	6.0

A calving-ease prospect out of our donor 447B and SVY Historic— an exciting, curve-bending AI sire. This calf has loads of middle and even more hair to pass on. Mike took his full brother out on the show road this fall.



# KG Mack 52M

PMC887552 • Polled • KG 52N • Jan. 12, 2025

  
*Lot*  
**56**

CE	BW	act WW	adj 205	EPDS	CE	BW	WW	YW	MM	MCE
★★★	76	-	845		13.7	-4.6	39	88	19	9.9

*Sire* TURNBULLS DUTY-FREE 358D  
**KG TRUE GRIT PLD 1K**  
 SOS PRINCESS KATE 33Y

*Dam* HTA QUANTUM PLD 26R  
**REESE CAROLE 54C**  
 SILVER SHADOW CASSANDRA 9R

We had to lead off this group of True Grit sons with this outstanding two-year-old. Kept as a spare, he ran with the herd bulls all summer with no extra TLC. Quiet as a kitten and ready to cover extra cows. Heifer approved.



SIRE KG TRUE GRIT PLD 1K



These True Grit sons are stamped just like their sire. 107N is out of a bigger-framed cow from Nish's that always produces. Her first calf is working at Lazy F Farms, Luseland, SK. If you want a sire group that truly stamps steer calves, take a serious look here.

## KG *Night Cap* 107N

PMC907452 • Polled • KG 107N • Jan. 05, 2025

## KG *Notorious* 165N

MC914525 • Horned • KG 165N • Feb. 10, 2025

Lot  
57

TURNBULLS DUTY-FREE 358D  
*Sire* **KG TRUE GRIT PLD 1K**  
 SOS PRINCESS KATE 33Y  
 HTA BILLY THE KID 974G  
*Dam* **NISH DOLLY PARTON 64K**  
 BREEZE NISH 95A

Lot  
58

TURNBULLS DUTY-FREE 358D  
*Sire* **KG TRUE GRIT PLD 1K**  
 SOS PRINCESS KATE 33Y  
 BRIMNER BULL 9F  
*Dam* **STEPPLER MISS 399K**  
 STEPPLER MISS 98H

CE	BW	act WW	adj 205	CE	BW	WW	YW	MM	MCE
★	90	865	818	7.9	-0.5	52	104	23	7.7

CE	BW	act WW	adj 205	CE	BW	WW	YW	MM	MCE
★★	86	780	847	13.1	-3.5	41	88	26	9.3



A very showy, moderate-made, clean-fronted bull. Free moving and out of a perfect-uddered cow from the Stepler program.

Another big-framed, rugged Ruger calf. His mother is a big-framed, hairy Chuckwagon cow with two sons working at Horner Ranches (Pollockville, AB) and Brian Plett (Gem, AB).  
**Owned with TF Cattle Co.**



**DAM SHAZAM 2H**

## KG *Navaho* 105N

PMC914532 • Polled • KG 105N • Jan. 05, 2025



LT RANSOM 8644  
*Sire* **WGD RUGER 8J**  
 WGD THE CRUSH 14D  
 SOS CHUCK WAGON 54C  
*Dam* **SOS SHAZAM 2H**  
 BWP FOXY SHAZAM 40Z

CE	BW	act WW	adj 205	CE	BW	WW	YW	MM	MCE
★	99	829	712	3.5	1.3	65	122	16	7.8

## KG *Ninja* 151N

PMC914517 • Polled • KG 151N • Jan. 22, 2025



LT RANSOM 8644  
*Sire* **WGD RUGER 8J**  
 WGD THE CRUSH 14D  
 JIL LAW N' ORDER 138F  
*Dam* **ONL MISS JEWEL 22H**  
 ONL MISS JEWEL 21F

CE	BW	act WW	adj 205	CE	BW	WW	YW	MM	MCE
★	109	894	834	-0.9	2.7	69	124	17	5.3

Out of a moderate-framed cow with a picture-perfect udder and milk for days. Purchased by TF Cattle from O'Neil's and one of our favorites ever since. If you're looking to keep females, this is the bull. One of Grace's picks of the pen. A Ruger son with hair, growth, great feet—and if he's like his sire, a breeding machine.  
**Owned with TF Cattle Co.**





A performance bull combining Ruger and Pastor. He'll add pounds to any calf crop. Big, athletic, and built to cover ground—ideal for large pastures. Out of SOS 58B, a proven flush cow. Fertility runs deep here.

## KG *Night Rider* 146N

PMC914513 • Polled • KG 146N • Jan. 20, 2025

Lot  
**61**

LT RANSOM 8644  
*Sire* **WGD RUGER 8J**  
 WGD THE CRUSH 14D  
 GERRARD PASTOR 35Z  
*Dam* **SOS PRADA 58B**  
 SOS LOVE DRUNK 51W

CE	BW	act WW	adj 205	CE	BW	WW	YW	MM	MCE
★	111	855	783	-2.7	3.9	65	119	21	5.2



DAM SOS PRADA 58B

# Thank you

FOR YOUR INTEREST IN THE  
**BULLS FOR EVERY BUDGET**  
 BULL SALE



## Full Brothers

When we put these embryos in we were hoping for heifers but bulls it is. Two power house bulls with old school pedigree. These bulls are full siblings to SOS 58B, our flush cow. You will notice 77N birthweight is 120lbs, compared to his full brother at 104lbs, I do believe that the recip cow can have a factor in the birthweight and gestation, as he went "over due". Don't let it scare you off, he will calve just like his full brother!



### KG *National* ET 186N

PEMC905192 • Polled • KG 186N • Jan. 10, 2025



GERRARD PREACHER 31U  
*Sire* **GERRARD PASTOR 35Z**  
 GERRARD ROXANNE 18P  
 SPARROWS SANCHEZ 715T  
*Dam* **SOS LOVE DRUNK 51W**  
 EFH DAISY MAE 30J

CE	BW	act WW	adj 205	CE	BW	WW	YW	MM	MCE
★	104	906	799	1.2	3.5	53	92	37	6.9

### KG *Overdue* ET 77N

PEMC905195 • Polled • KG 77N • Jan. 12, 2025



GERRARD PREACHER 31U  
*Sire* **GERRARD PASTOR 35Z**  
 GERRARD ROXANNE 18P  
 SPARROWS SANCHEZ 715T  
*Dam* **SOS LOVE DRUNK 51W**  
 EFH DAISY MAE 30J

CE	BW	act WW	adj 205	CE	BW	WW	YW	MM	MCE
★	120	853	760	-1.2	2.8	52	102	38	4.6



SIRE GERRARD PASTOR 35Z





An eye-catcher since he was a calf—wide topped, hairy, and big hiped. If you want added performance while maintaining calving ease, this is your bull. Smooth shouldered with a nice head. These Luxor bulls are hard to overlook.

**Owned with TF Cattle Co.**



**DAM LANDMARKS MAID 934G**

## KG *Net Worth* 126N

PMC913434 • Polled • KG 126N • Jan. 09, 2025

## KG *Norrus* 155N

PMC914518 • Polled • KG 155N • Jan. 24, 2025

Lot  
**64**

Sire PCC BOURBON 118J  
**SOS LUXOR PLD 358L**  
SOS PRINCESS KATE 33Y  
SVY GRIZZLY PLD 521C  
Dam **MXS LANDMARKS MAID 934G**  
MXS LANDMARKS MAID 775E

Lot  
**65**

Sire PCC BOURBON 118J  
**SOS LUXOR PLD 358L**  
SOS PRINCESS KATE 33Y  
JWX CRACKER JACK 197C  
Dam **MXS NORTH STAR MAID 869F**  
MXS NORTHSTAR MAID 531C

CE	BW	act WW	adj 205	CE	BW	WW	YW	MM	MCE	CE	BW	act WW	adj 205	CE	BW	WW	YW	MM	MCE
★	101	863	753	2.0	1.3	59	106	23	3.9	★	106	945	871	-5.3	4.2	73	123	24	2.7



If you're looking for a big, powerful tan bull—here he is. Built like a tank end to end. The Luxor females are unreal, and this bull proves the sons are just as good.

**Owned with TF Cattle Co.**



**DAM NORTH STAR MAID 869F**

One of my favorite bull calves all summer. Out of a very nice Fire-water daughter. If you're looking for maternal traits, I wouldn't hesitate to keep females from this bull.

**Owned with TF Cattle Co.**



**DAM BAILEY 637D**

## KG *Notification* 122N

PMC913432 • Polled • KG 122N • Jan. 07, 2025



*Sire* PCC BOURBON 118J  
**SOS LUXOR PLD 358L**  
SOS PRINCESS KATE 33Y

*Dam* TR MR FIRE WATER 5792RET  
**MXS BAILEY 637D**  
MXS BAILEY 120Y

CE	BW	act WW	adj 205	CE	BW	WW	YW	MM	MCE
★	96	870	752	1.4	1.1	60	108	27	0.3

## KG *Night Wing* 116N

MC914529 • Horned • KG 116N • Jan. 06, 2025



*Sire* PCC BOURBON 118J  
**SOS LUXOR PLD 358L**  
SOS PRINCESS KATE 33Y

*Dam* JWX CRACKER JACK 197C  
**MXS ESPEON 861F**  
MXS ESPEON 549C

CE	BW	act WW	adj 205	CE	BW	WW	YW	MM	MCE
★	112	940	811	-7.2	4.9	66	106	23	0.0

A higher-birthweight Luxor son with a big weaning weight. We all sell calves by the pound—this bull will calve well and add pounds. Out of a powerful MXS cow that consistently weans one of the heaviest calves each fall.

**Owned with TF Cattle Co.**



**DAM ESPEON 861F**



Another outcross embryo I purchased. This Duty Free calf is out of one of the smallest recip cows, yet he has been the heaviest-gaining calf from the word go. If you're looking for a performance bull to add pounds, this is your bull.



SIRE DUTY-FREE 358D

## KG *Down Under* ET 275N

PEMC904642 • Polled • KG 275N • Jan. 01, 2025



*Sire* PLEASANT DAWN MVP 316Y  
**TURNBULLS DUTY-FREE 358D**  
CTP MISS GOOGLE 358Z

*Dam* VENTURON CRUSTY DEMON  
**VENTURON HOLLIE**  
VENTURON FLORA

CE	BW	act WW	adj 205	CE	BW	WW	YW	MM	MCE
★	102	1126	955	9.2	-1.1	51	109	25	10.7

## KG SOS *Nitro* ET 20N

PEMC905183 • Homo Polled • KG 20N • Jan. 22, 2025



*Sire* OW MAXIMIZER 3041 PLD  
**KEYS POWERMAX 57G**  
MISS KEY JERI 26E

*Dam* ZKCC GAME ON 266Z  
**MISS PRAIRIE COVE 748E**  
MISS PRAIRIE COVE 407B

CE	BW	act WW	adj 205	CE	BW	WW	YW	MM	MCE
★	93	864	790	9.9	-0.7	64	115	28	10.2



A Powermax son with an excellent set of numbers out of PCC 748E—an influential flush cow that made her mark at SOS and now works at EXL, and the dam of SOS Kickstart (Show Bull of the Year). This bull puts it all together front to back. Homo polled, PA free.  
**Owned with Springside Cattle Co.**



DAM PRAIRIE COVE 748E

# KG Nitty Gritty 160N

MC914521 • Horned • KG 160N • Jan. 28, 2025

Lot  
70

Sire RGP REMINGTON 101Y  
**HTA DEFENDER 846F**  
HTA HOT STUFF 349A

Dam BOBS EARNED IT 86E  
**BOBS COWBELLA 72H**  
SOS SWEET CHEEKS 19B

CE	BW	act WW	adj 205	CE	BW	WW	YW	MM	MCE
★	94	830	777	2.2	0.7	53	104	25	7.7

One of our favorite bulls in the pen—among the widest topped and biggest hiped. Out of one of our favorite cows from the BOB dispersal. And yes, he's horned.



DAM COWBELLA 72H



# KG Napoleon 109N

PMC907453 • Polled • KG 109N • Jan. 05, 2025

Lot  
71

Sire RGP REMINGTON 101Y  
**HTA DEFENDER 846F**  
HTA HOT STUFF 349A

Dam SDC BULLHORN 11B  
**BOBS ESSENCE 171E**  
SOS NATASHIA 32B

CE	BW	act WW	adj 205	CE	BW	WW	YW	MM	MCE
★	93	853	731	6.0	0.2	59	109	20	7.9

Out of a cow we had high on our hit list at the BOB dispersal. Bob mentioned he thought she was carrying twins—and she was. It never slowed this bull down, and 171E bred back first cycle. Fertility runs deep in this pedigree.



DAM ESSENCE 171E



# KG Nasa 157N

PMC914519 • Polled • KG 157N • Jan. 26, 2025

Lot  
72

Sire TURNBULLS DUTY-FREE 358D  
**SOS JACKPOT PLD 158J**  
MXS EVERLY 816F

Dam BRIDOR FORTUNE MAKER 6F  
**SOS MATILDA PLD 121J**  
SOS MEG 54G

CE	BW	act WW	adj 205	CE	BW	WW	YW	MM	MCE
★	115	797	758	-7.0	5.3	75	115	25	3.7

The only Jackpot bull in the pen—and wow is he good. The hardest bull to picture; make sure to watch his video. He's impressive.

Owned with TF Cattle Co.





# KG *Nixon* 90N

PMC907448 • Polled • KG 90N • Jan. 02, 2025



CE	BW	act WW	adj 205	CE	BW	WW	YW	MM	MCE
★★★	87	746	710	9.8	-0.7	60	107	16	8.6

Sire RBM TR RHINESTONE Z38 CBF ADMIRAL 934G  
**TR CAG CARBON COPY 7630E ET** Dam **WRANGLER MS CASSIDY 215K**  
 M&M MS CARBINE 1567 PLD MCTAVISH CASSIDY 116G

This Carbon Copy son should calve like a dream. We used Carbon Copy on a good portion of our heifer pen, and this was the only bull we got. The females are lights out, and this bull is just as nice as his sisters—moderate and made right.



SIRE CARBON COPY 7630E ET

Out of a very nice Duty Free first-calver. Plenty of shape with a balanced combination of calving ease and moderate birthweight. Heifer approved.  
**Owned with TF Cattle Co.**



## KG *Nickle* 159N

PMC914520 • Polled • KG 159N • Jan. 27, 2025



*Sire* PRO-CHAR WILSON 2J  
**HWY LEGEND 23L**  
 SOS MARVEL PLD 154J

*Dam* TURNBULLS DUTY-FREE 358D  
**SOS EMPRESS 55L**  
 SOS EMPRESS 48E

CE	BW	act WW	adj 205	CE	BW	WW	YW	MM	MCE
★★★	82	794	816	13.6	-3.3	53	108	25	8.4

## KG *Ned* 139N

PMC914510 • Polled • KG 139N • Jan. 16, 2025



*Sire* PRO-CHAR WILSON 2J  
**HWY LEGEND 23L**  
 SOS MARVEL PLD 154J

*Dam* WCR COMMISSIONER 593 P  
**KG CAROLE 20L**  
 REESE CAROLE 54C

CE	BW	act WW	adj 205	CE	BW	WW	YW	MM	MCE
★★★	76	735	732	17.6	-5.2	49	98	20	9.8

Related on the bottom side to our two-year-old bull on offer. Moderate 76 lb birthweight, double-bred calving ease top and bottom. A true sleep-all-night heifer bull.





## KG *Night Bear* 112N

PMC914531 • Polled • KG 112N • Jan. 06, 2025

Lot  
76

*Sire* M&M OUTSIDER 4003 PLD  
**BRCHE WHITE BEAR 8505 PLD ET**  
TR MS BERKLY 4711B ET

*Dam* SOS PANDEMIC 168H  
**SOS LINDA 110L**  
MXS LUCY 810F

CE	BW	act WW	adj 205	CE	BW	WW	YW	MM	MCE
★	91	839	798	3.3	0.1	67	115	19	5.1

Our only White Bear in the offering, out of a very nice first-calver that did a whale of a job—this calf weaned off at over 800 lbs. He fits well on second-calvers or young cows if you want easy calving without sacrificing weaning weight.

**Owned with TF Cattle Co.**



## KG *Clifford* 114N

QPMC907454 • Polled • KG 114N • Jan. 06, 2025

Lot  
77

*Sire* TURNBULLS DUTY-FREE 358D  
**SOS LEGACY PLD 39L**  
SOS FUSCHIA PLD 109F

*Dam* LT SUNDANCE 2251 PLD  
**MXS SUNMADE 925G**  
MXS GRIZZLY' S MAID 701E

CE	BW	act WW	adj 205	CE	BW	WW	YW	MM	MCE
★★★	82	706	609	10.6	-1.5	66	127	19	10

A surprise at birth—dark, dark red with some black on his face and tail. Out of a very cool Sun Dance female. Moderate 82 lb birthweight with a strong set of EPDs. Heifer approved. A half brother is working at Sunshine Hill Farms, Consul, SK.



## KG *Network* 113N

PMC914530 • Polled • KG 113N • Jan. 06, 2025

Lot  
78

*Sire* TURNBULLS DUTY-FREE 358D  
**SOS LEGACY PLD 39L**  
SOS FUSCHIA PLD 109F

*Dam* TRI-N RED BARON 765E  
**TRI-N RATIONELLE 1009G**  
TRI-N RATIONELLE 157Z

CE	BW	act WW	adj 205	CE	BW	WW	YW	MM	MCE
★★	82	803	691	11.4	-2.0	67	123	9	13

Out of a hard-working red-factor cow Brian bought from the Tri-N dispersal. A nicely made, moderate-framed bull that will go out and work in any commercial herd. Half brother is working at Border Ridge Farms, Hilda, Ab.

**Owned with TF Cattle Co.**



# KG LAND & CATTLE

## *Commercial Heifers*



### *Five* Commercial Heifers

Lot  
79

TAG	DOB	BW	OCT 18 WW	TAG	DOB	BW	OCT 18 WW
N249	Jan 15/25	105	789	N241	Jan 18/25	94	830
N284	Jan 8/25	82	760	N371	Dec 28/24	99	882
N307	Jan 22/25	98	755				

Lot  
80

### *Four* Commercial Heifers

TAG	DOB	BW	OCT 18 WW
N323	Jan 20/25	83	717
N328	Jan 18/25	84	727
N266	Jan 18/25	82	743
N322	Jan 26/25	94	723





Lot  
81

### Four Commercial Heifers

TAG	DOB	BW	OCT 18 WW	TAG	DOB	BW	OCT 18 WW
N265	Jan 12/25	85	768	N74	Feb 20/25	97	690
N377	Dec 25/24	75	733	N220	Mar 5/25	81	701



Lot  
82

### Four Commercial Heifers

TAG	DOB	BW	OCT 18 WW
N354	Jan 6/25	108	831
N376	Jan 7/25	88	743
N347	Jan 7/25	81	703
N375	Jan 5/25	79	782



Lot  
83

### Two Commercial Heifers

TAG	DOB	BW	OCT 18 WW
N383	Jan 3/25	76	719
N392	Dec 26/24	71	705

**Lot**  
**84**

### Three Commercial Heifers

TAG	DOB	BW	OCT 18 WW
N189	Mar 9/25	85	644
N240	Jan 20/25	90	759
N238	Feb 1/25	82	671



**Lot**  
**85**

### Four Commercial Heifers

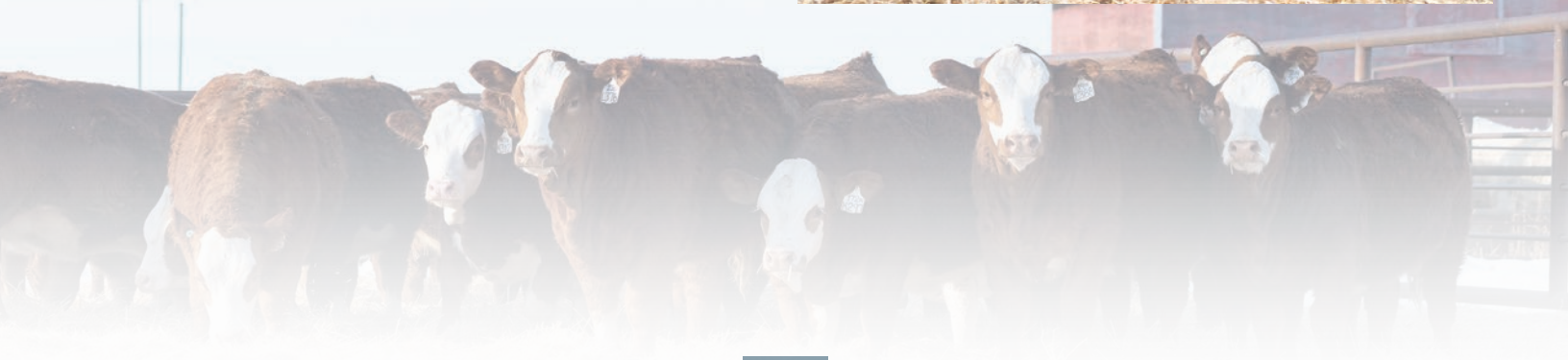
TAG	DOB	BW	OCT 18 WW
N24	Feb 13/25	76	682
N297	Feb 4/25	94	655
N357	Jan 23/25	81	684
N312	Jan 20/25	82	649



**Lot**  
**86**

### Three Commercial Heifers

TAG	DOB	BW	OCT 18 WW
N17	Jan 21/25	95	685
N290	Jan 28/25	95	690
N388	Jan 5/25	93	768



**SPRINGSIDE CATTLE CO.**  
608 800 Yankee Valley Blvd. S.E.  
Airdrie, Alberta  
T4A 2L1



ALBERTA CHAROLAIS ASSOCIATION  
CHAMPION PAIR OF BULLS - Dec. 13, 2025.  
Play to the order of KG Livestock Inc. 1000  
500 Dollars

ALBERTA CHAROLAIS ASSOCIATION  
RESERVE CHAMPION PAIR OF BULLS - Dec. 13, 2025.  
Play to the order of Springside Cattle Co. 500  
500 Dollars

**WWW.SPRINGSIDECATTLE.COM**