



6th Annual
TURNBULL
CHAROLAIS *and* GUESTS
BULL SALE

Saturday, MARCH 7, 2026, 1:00 P.M. MST
Turnbull Charolais Sale Barn, Pincher Creek, AB

WITH GUEST A & L ROBBINS RANCHING LTD. ANGUS

6th Annual
TURNBULL
CHAROLAIS and GUESTS
BULL SALE

With Guests:

A & L ROBBINS RANCHING LTD.

Saturday, March 7th, 2026 • 1:00 PM
Turnbull Charolais Sale Barn, Pincher Creek, AB

72 CHAROLAIS YEARLING BULLS
27 RED AND BLACK ANGUS
LONG YEARLING BULLS

SALE DAY PHONES

Curtis Turnbull, Turnbull Charolais.....403-627-6951
Nanette Turnbull, Turnbull Charolais.....403-632-9724
Alvin Robbins, A & L Robbins Ranching.....403-627-7398
David Robbins, A & L Robbins Ranching.....403-627-9398

SALE MANAGEMENT

Jon Wright.....306-807-8424
Brennon Archdekin.....306-442-7875

AUCTIONEER

Frank Jenkins.....403-627-6700

RING SERVICE

Ryan Konyonenbelt.....403-892-6534
Andrew Reeleder.....403-848-1260

SALES STAFF

Justin Keeley.....403-627-6534
Dylan Bates.....403-627-6546

SPECIAL REPRESENTATION

Robbie Chomik, Charolais Banner.....780-336-6424

SALE ONLINE WITH DLMS

The sale will be available for online viewing and bidding at www.dlms.ca
Mark Shologan.....780-699-5082



Video Sale

This sale is a video sale. The bulls will sell by video and will not enter a sale ring on sale day. We welcome you to view the bulls prior to the sale. For up-to-date sale information and videos, please visit:

Wright Livestock Marketing Facebook page,
www.wrightlivestockmarketing.com or www.dlms.ca

SIGHT UNSEEN PURCHASE PROGRAM

We know that as producers, you may be busy and unable to attend on sale day or tour the bull pen. We can assist you with finding the right bull(s) to meet the needs of your program. Please feel free to contact any of the sale consignors or sale staff, who would be happy to assist you with finding the right bull(s) for your program requirements.

INSURANCE

Cheryl Brown, Stockmens Insurance 403-601-3460
*Insurance will be available to purchase on sale day. The animals become your responsibility as soon as sold. We recommend insuring your purchases.

SEMEN RIGHTS

Turnbull Charolais and A & L Robbins Ranching Ltd. retains in-herd semen interest on all bulls sold in the sale, at the seller's expense and owner's convenience, to be drawn at a future date.

EXCHANGE RATE

For our American friends, the exchange rate will be announced on sale day at the start of the sale.

DELIVERY

Free delivery within 350 kms. In excess of 350kms, delivery will be charged at cost for the kms in excess of 350 kms. Delivery will occur as soon as practical after the sale, at the buyer's risk.

WINTERING PROGRAM

Coordinated delivery starting April 1st, 2026. Bulls remaining at Turnbull Charolais must be insured!

TERMS & CONDITIONS

Sale is conducted under the Canadian Charolais Association's Code of Ethics, and the Canadian Angus Association Code of Ethics.

ACCOMMODATIONS

Ramada Hotel.....403-627-3777
Heritage Inn Hotel.....403-627-5000
Stardust Inn & Chalets.....403-627-4366
Travelodge.....403-904-8040

Please join us for lunch before the sale!

*A special thank you to our caterer, Twin Butte Country Store, for catering the lunch

A SPECIAL THANK YOU TO OUR FOOD SPONSORS



A SPECIAL THANK YOU TO THE SPONSORS OF THE BUYERS DRAW



4 Omega Tubs

1 – 20L pail of DMO
15W40 Oil & 1 –
20L pail of DMO
5W40 Oil

1 – 12' Gate

1 – Bag of Grass Seed

Canadian Charolais Association Breed Average EPDs – January 2026

EPDs	CE	BW	WW	YW	M
	5.3	0.3	60.7	111.6	22.7

**Canadian Angus Association Red Angus Breed Average EPDS
World Angus Evaluation – January 2026**

EPDs	CE	BW	WW	YW	M	MCE
	2.3	1.3	44	76	25	5.2

**Canadian Angus Association Black Angus Breed Average EPDS
World Angus Evaluation – January 2026**

EPDs	CE	BW	WW	YW	M	MCE
	3.3	2.0	56	99	23	6.4

TURNBULL CHAROLAIS CATALOGUED WEIGHTS
Turnbull Charolais bull weights listed in the catalogue are the **Actual weights.**

- Weaning weights taken on September 23rd, 2025
- Yearling weights taken on January 3rd, 2026
- Sale day weights will be available on sale day

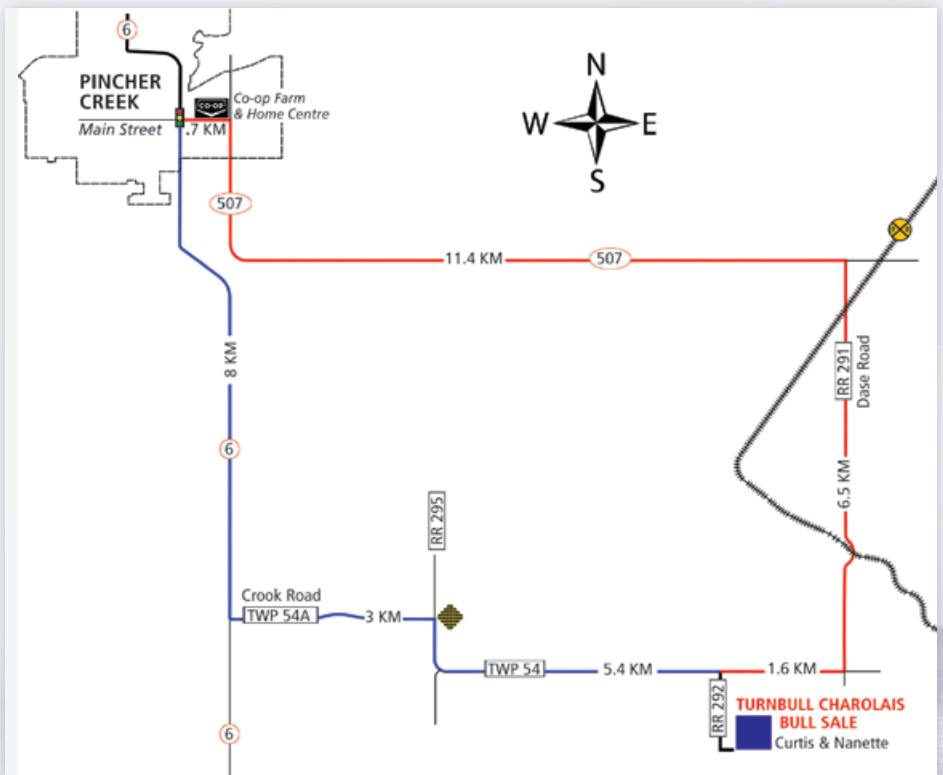
DLMS

**Can't make it to the sale?
Internet Bidding available.**

To view this sale visit www.dlms.ca Fill out the registration form located under registration and sign-up for your free user account and select a username and password.

BIDDERS - To be approved as a bidder, login to www.dlms.ca and click BUYER APPROVAL tab, select the sale you are interested in bidding at and click sign up.

For more information call a DLMS Rep:
Mark Shologan 780-699-5082
DLMS Purebred Team 780-991-3025



Welcome

FROM TURNBULL CHAROLAIS

On behalf of our family, we'd like to extend a warm welcome to our 6th Annual Turnbull Charolais and Guests Bull Sale.

We sincerely appreciate the continued support of our returning customers and are pleased to welcome new customers to the program. Your confidence in our operation and the trust you place in our genetics is something we are grateful for each year.

We are proud to present this year's set of bulls and believe it is one of the strongest and most consistent groups we've offered, and we're excited to share them with you.

Over the past several years, we've been extremely selective with the genetics we've brought into our program. This group offers a combination of calving ease, strong performance, hair, good disposition, and overall structure. We're confident these bulls will go out and work hard for you, with a selection designed to support success across a variety of breeding programs.

This year, the bulls were out in a 40-acre field from weaning through January 1st. They were able to get plenty of exercise, maintain sound feet, and develop naturally on pasture while still receiving their ration. We feel this management really sets them up for longevity and success.

If you're able to stop by the ranch to view the bulls in person, we always encourage and welcome that. If you're not able to make it out before sale day on March 7th, the bulls can also be viewed through the Charolais Banner, Wright Livestock Marketing website or on DLMS.

If you have any questions, please don't hesitate to call Curtis at (403) 627-6951.

Thank you again for being here and for supporting our family and our program. We truly appreciate each and every one of you and look forward to seeing you on sale day.

Curtis, Nanette, Kim (Ross), Kelly, and Dyllan

Turnbull Charolais

Pincher Creek, AB

Curtis: (403)627-6951

www.turnbullcharolais.com



Welcome

FROM WRIGHT LIVESTOCK MARKETING

Welcome to the 6th Annual Turnbull Charolais and Guest Bull Sale. Along with guest A & L Robbins Ranching Ltd., we are very excited and honoured to be working with these two renowned and prestigious programs once again. What a remarkable offering of yearling Charolais and long-yearling Red and Black Angus bulls that these consignors have assembled for this year's bull sale.

When touring the Turnbull pastures in the fall, we couldn't help but witness and appreciate how exciting the bull calf crop was at that stage and see the quality, the potential and the excitement in which is now this year's sale offering. They have developed into an outstanding set of herd bulls that are ready to go out and realize their potential, to sire and stamp those calves that will make a positive impact in the program they go and work for. The excitement and hype surrounding this year's bull pen is definitely warranted, it is flat out exceptional! Not only is the quality of the bulls outstanding, but so are the people behind the bulls that raised them.

When looking at the Angus offering, you can see the consistency and quality, and the results of years spent developing a program that works in all environments. These bulls are solid, stout, sound and made to work in whatever environment they are placed in. The A & L Robbins program does fall calving, and their focus for many years has been marketing long yearling bulls that are ready to go out and work. There are no second cuts here, this program has marketed long yearling bulls for many, many years, and their repeat customers can testify to the quality of the bulls that this program produces.

With the excitement and the momentum that the cattle markets are seeing, it is hard to not be optimistic about the livestock industry and the returns that we are seeing. Being in the livestock industry, we have developed into the resilient, strong programs that we are today by overcoming and weathering every obstacle that is thrown our way, and it is nice to reap the rewards while they are coming. If you are looking to purchase some new herd bulls to add performance to your calf crop, or to produce daughters to build your replacement pen, look no further than this offering. We can help source the bull that will fit the needs of your program, and offer you the confidence in knowing that the bull that you are buying is backed by the people and 2 of the very best programs who believe in their product and stand by it.

Sincerely,

Jon & Sarah Wright

WRIGHT LIVESTOCK MARKETING



WRIGHT
LIVESTOCK MARKETING
JON & SARAH WRIGHT
306-807-8424
www.wrightlivestockmarketing.com



Sparrows Lampman 301L

RS Sparrows LAMPMAN 301L

MC865537 // SB 301L // 05-Jan-23

Sire

Dam

LT RIO BRAVO 3181 P

PRO-CHAR JAMIESON 68F

LT RUSHMORE 8060 PLD

SPARROWS LILIAN 338J

LT BRENDA'S EASE 3055PLD

SPARROWS LILLIAN 138C

PERF	Act BW	Act WW	Act YW	EPDs	CE	BW	WW	YW	M
	66	749	1132		16.3	-3.4	61	105	25

Polled



Wright

LOT 1

1

Turnbull's NIGHTCAP 431N

MC901296 // CTP 431N // 14-Jan-25

Sire

Dam

LT RUSHMORE 8060 PLD

PLEASANT DAWN MVP 316Y

SPARROWS LAMPMAN 301L

TURNBULL'S LIA 431L

SPARROWS LILIAN 338J

CTP MISS ALLY 608C

EPDs	CE	BW	WW	YW	M
	18.9	-6.7	64	122	23
PERF	Act BW	Act WW	Act YW		
	77	852	1330		

Homo Polled, retaining 1/3 semen interest



LOT 2

2

Turnbull's NFL 413N

MC901295 // CTP 413N // 10-Jan-25

Sire

LT RUSHMORE 8060 PLD
SPARROWS LAMPMAN 301L
 SPARROWS LILIAN 338J

Dam

PLEASANT DAWN MVP 316Y
TURNBULL'S MISS LULULEMON 413L
 TURNBULL'S MISS JENNY 941F

EPDS	CE	BW	WW	YW	M
	21.1	-8.3	57	100	22
PERF	Act BW		Act WW		Act YW
	76		950		1290

Homo Polled, retaining 1/3 semen interest





LOT 3

3 *Turnbull's* **NEXT STEP 412N**

MC901305 // CTP 412N // 20-Jan-25

Sire

Dam

LT RUSHMORE 8060 PLD

KEYS DUDE 223J

SPARROWS LAMPMAN 301L

TURNBULL'S MISS LONDYN 412L

SPARROWS LILIAN 338J

TURNBULL'S MISS APRIL 107H

PERF	Act BW	Act WW	Act YW	EPDs	CE	BW	WW	YW	M
	91	846	1190		12.9	-1.5	65	121	29

Homo Polled

4 *Turnbull's* **NICO 444N**

MC901332 // CTP 444N // 26-Jan-25

Sire

Dam

LT RUSHMORE 8060 PLD

STEPPLER MAGNUM 99G

SPARROWS LAMPMAN 301L

TURNBULL'S MISS LEIGH 444L

SPARROWS LILIAN 338J

TURNBULL'S ARIANA 244J

PERF	Act BW	Act WW	Act YW	EPDs	CE	BW	WW	YW	M
	79	784	1150		14.9	-4	56	110	32

Homo Polled



LOT 4



LOT 5

5

Turnbull's **NORTHSTAR 406N**

MC901310 // CTP 406N // 21-Jan-25

Sire

LT RUSHMORE 8060 PLD
SPARROWS LAMPMAN 301L
 SPARROWS LILIAN 338J

Dam

HC JAGERMEISTER 160J
TURNBULL'S MISS LASHFULL 406L
 TURNBULL'S MISS DAWN 109H

EPDs	CE	BW	WW	YW	M
	11	-2.6	73	133	34
PERF	Act BW	Act WW	Act YW		
	84	952	1290		

Homo Polled, retaining 1/3 semen interest

6

Turnbull's **NEVERFAIL 407N**

MC901333 // CTP 407N // 26-Jan-25

Sire

LT RUSHMORE 8060 PLD
SPARROWS LAMPMAN 301L
 SPARROWS LILIAN 338J

Dam

PLEASANT DAWN MVP 316Y
TURNBULL'S MISS LAVISH 407L
 TURNBULL'S MISS TABITHA 809E

PERF	Act BW	Act WW	Act YW	EPDs	CE	BW	WW	YW	M
	101	866	1255		5.2	0.4	74	146	23

Homo Polled



LOT 6



KEYS DUDE 223J

RS

Keys DUDE 223J

MC835057 // // 23-Mar-21

Sire

KEYS PROGRESSIVE 170Z
KEYS BALLYHOO 77D
 MISS KEY GORGEOUS 90Z

Dam

KEYS FRONTLINE 106X
MISS KEY NORA 94Z
 MISS KEY NORA 32U

PERF	Act BW	Act WW	Act YW	EPDs	CE	BW	WW	YW	M
	80	675	1385		7.8	1.2	58	120	16

Homo Polled



Wright

LOT 7

7

Turnbull's NINJA 308N

MC901372 // CTP 308N // 02-Feb-25

Sire

KEYS BALLYHOO 77D
KEYS DUDE 223J
 MISS KEY NORA 94Z

Dam

CEDARLEA SHOELESS JOE 83C
TURNBULLS MISS JOANNE 308K
 TURNBULL'S MISS DAWN 109H

EPDs	CE	BW	WW	YW	M
	8.5	-0.5	59	115	23
PERF	Act BW	Act WW	Act YW		
	96	836	1235		

Homo Polled, retaining 1/3 semen interest



LOT 8

8

Turnbull's NEIL 314N

MC901345 // CTP 314N // 29-Jan-25

Sire

KEYS BALLYHOO 77D
KEYS DUDE 223J
 MISS KEY NORA 94Z

Dam

CEDARLEA YELLOWSTONE 184H
TURNBULL'S MISS MARY-KATE 314K
 TURNBULL'S MISS EVE 969F

EPDs	CE	BW	WW	YW	M
	5.5	1.4	67	120	17
PERF	Act BW	Act WW	Act YW		
	89	912	1280		

Heterozygous Polled





9 *Turnbull's* **NUGGET 382N**

MC901318 // CTP 382N // 23-Jan-25

Sire

KEYS BALLYHOO 77D
KEYS DUDE 223J
 MISS KEY NORA 94Z

Dam

ELDER'S PLATINUM 906G
TURNBULL'S MISS AMBER 382K
 JWX BUCKLE BUNNY 250B

PERF	Act BW	Act WW	Act YW	EPDs	CE	BW	WW	YW	M
	73	790	1150		10.3	-0.5	56	112	20

Polled - TWIN



10 *Turnbull's* **NORM 814N**

MC901349 // CTP 814N // 30-Jan-25

Sire

KEYS BALLYHOO 77D
KEYS DUDE 223J
 MISS KEY NORA 94Z

Dam

PLEASANT DAWN CHISUM 216A
PLEASANTDAWN JASMINE 814C
 PLEASANTDAWN ETTA 4Z

PERF	Act BW	Act WW	Act YW	EPDs	CE	BW	WW	YW	M
	106	920	1295		1.6	1.8	61	122	20

Polled





LOT 11

11 *Turnbull's* **NEGOTIATE 300N**

MC901364 // CTP 300N // 31-Jan-25

Sire

KEYS BALLYHOO 77D
KEYS DUDE 223J
 MISS KEY NORA 94Z

Dam

STEPPLER MAGNUM 99G
TURNBULL'S MISS SANDY 300K
 TURNBULL'S MISS VALIANT 175H

PERF	Act BW	Act WW	Act YW	EPDs	CE	BW	WW	YW	M
	93	798	1175		9.9	-1.4	50	106	21

Polled

12 *Turnbull's* **NEW DUDE 389N**

MC901365 // CTP 389N // 31-Jan-25

Sire

KEYS BALLYHOO 77D
KEYS DUDE 223J
 MISS KEY NORA 94Z

Dam

CEDARLEA YELLOWSTONE 184H
TURNBULL'S MISS FAITH 389K
 TURNBULL'S JENNIFER 38G

PERF	Act BW	Act WW	Act YW	EPDs	CE	BW	WW	YW	M
	99	764	1120		4	0.6	60	110	16

Polled



LOT 12



LOT 13

13

Turnbull's NORTHBOUND 312N

MC901363 // CTP 312N // 31-Jan-25

Sire

KEYS BALLYHOO 77D
KEYS DUDE 223J
 MISS KEY NORA 94Z

Dam

TURNBULLS DUTY-FREE 358D
TURNBULL'S MISS LEANNE 312K
 LAE VISTAZO'S CZARINA 4107B

EPDS	CE	BW	WW	YW	M
	6.1	-0.4	70	138	18
PERF	Act BW	Act WW	Act YW		
	92	880	1265		

Homo Polled





LOT 14

14

Turnbull's NIGHTHAWK 346N

MC901360 // CTP 346N // 31-Jan-25

Sire

KEYS BALLYHOO 77D
KEYS DUDE 223J
 MISS KEY NORA 94Z

Dam

HIGH BLUFF HEAD LINER 147H
TURNBULL'S MISS RENATA 346K
 TURNBULL'S JACKIE 942F

EPDs	CE	BW	WW	YW	M
	2.1	2	67	129	25
PERF	Act BW	Act WW	Act YW		
	98	908	1320		

Homo Polled





LOT 15

15 *Turnbull's* **NASCAR 398N**

MC904183 // CTP 398N // 03-Feb-25

Sire

KEYS BALLYHOO 77D
KEYS DUDE 223J
 MISS KEY NORA 94Z

Dam

CEDARLEA YELLOWSTONE 184H
TURNBULL'S MISS AMBIENT 398K
 TURNBULL'S KYLIE 24G

PERF	Act BW	Act WW	Act YW	EPDs	CE	BW	WW	YW	M
	104	870	1280		8.9	0.3	72	132	13

Homo Polled

16 *Turnbull's* **NAVY 371N**

MC904205 // CTP 371N // 05-Feb-25

Sire

KEYS BALLYHOO 77D
KEYS DUDE 223J
 MISS KEY NORA 94Z

Dam

HVA FORTUNE 5F
TURNBULL'S MISS TINSLEY 371K
 TURNBULLS DELICACY 740D

PERF	Act BW	Act WW	Act YW	EPDs	CE	BW	WW	YW	M
	100	846	1285		5.2	2	59	115	24

Polled



LOT 16

17 *Turnbull's* NEXT LEVEL 359N

MC904186 // CTP 359N // 03-Feb-25

Sire

KEYS BALLYHOO 77D
KEYS DUDE 223J
 MISS KEY NORA 94Z

Dam

HIGH BLUFF HEAD LINER 147H
TURNBULL'S MISS NOVA 359K
 TURNBULL'S MISS BREANNE 918F

PERF	Act BW	Act WW	Act YW	EPDs	CE	BW	WW	YW	M
	103	804	1250		3.5	2.5	58	124	21

Polled



LOT 17

18 *Turnbull's* NOLAN RYAN 387N

MC904235 // CTP 387N // 07-Feb-25

Sire

KEYS BALLYHOO 77D
KEYS DUDE 223J
 MISS KEY NORA 94Z

Dam

HIGH BLUFF HEAD LINER 147H
TURNBULL'S MISS REMI 387K
 TURNBULL'S MISS JILLANA 819E

PERF	Act BW	Act WW	Act YW	EPDs	CE	BW	WW	YW	M
	92	844	1240		8.4	-0.9	60	125	22

Homo Polled



LOT 18

19 *Turnbull's* NAVIGATOR 367N

MC904257 // CTP 367N // 12-Feb-25

Sire

KEYS BALLYHOO 77D
KEYS DUDE 223J
 MISS KEY NORA 94Z

Dam

CEDARLEA YELLOWSTONE 184H
TURNBULL'S MISS DAZZLE 367K
 TURNBULL'S MISS CHLOE 55G

PERF	Act BW	Act WW	Act YW	EPDs	CE	BW	WW	YW	M
	108	838	1245		0.8	2.3	70	128	19

Polled



LOT 19



LOT 20

20 *Turnbull's* **NANDOS 369N**

MC904237 // CTP 369N // 08-Feb-25

Sire

KEYS BALLYHOO 77D
KEYS DUDE 223J
 MISS KEY NORA 94Z

Dam

ELDER'S PLATINUM 906G
TURNBULL'S MISS VICTORIA 369K
 CTP MISS MVP 563B

PERF	Act BW	Act WW	Act YW	EPDs	CE	BW	WW	YW	M
	92	792	1215		8.7	-0.7	53	108	21

Polled

21 *Turnbull's* **NICK SWISHER 306N**

MC904318 // CTP 306N // 25-Feb-25

Sire

KEYS BALLYHOO 77D
KEYS DUDE 223J
 MISS KEY NORA 94Z

Dam

JWX BUCKLE 1X
CTP MISS MODESTY 306Z
 CTP MISS GOLDEN WIND 98X

PERF	Act BW	Act WW	Act YW	EPDs	CE	BW	WW	YW	M
	104	798	1060		7.2	-0.2	47	85	23

Heterozygous Polled



LOT 21

22 Turnbull's NIGHT SHIFT 363N

MC904264 // CTP 363N // 14-Feb-25

Sire

KEYS BALLYHOO 77D

KEYS DUDE 223J

MISS KEY NORA 94Z

Dam

ELDER'S HERNANDEZ 17E

TURNBULL'S MISS BRIELLE 363K

CTP MISS LOOKING GOOD196X

PERF	Act BW	Act WW	Act YW	EPDs	CE	BW	WW	YW	M
	100	800	1115		6.2	1.7	60	113	23

Polled



LOT 22

23 Turnbull's NORRIS 305N

MC904316 // CTP 305N // 25-Feb-25

Sire

KEYS BALLYHOO 77D

KEYS DUDE 223J

MISS KEY NORA 94Z

Dam

TURNBULLS DUTY-FREE 358D

TURNBULL'S MISS KYRA 305K

CTP MISS AMULET 419A

PERF	Act BW	Act WW	Act YW	EPDs	CE	BW	WW	YW	M
	96	748	1145		7	0.2	59	120	20

Polled



LOT 23

24 Turnbull's NOBLE 360N

MC904334 // CTP 360N // 17-Mar-25

Sire

KEYS BALLYHOO 77D

KEYS DUDE 223J

MISS KEY NORA 94Z

Dam

PLEASANT DAWN MVP 316Y

TURNBULL'S MISS ANGEL 360K

TURNBULL'S MISS HARMONY 152H

PERF	Act BW	Act WW	Act YW	EPDs	CE	BW	WW	YW	M
	102	700	1120		5.1	0.6	60	119	23

Polled



LOT 24



LOT 25

25

Turnbull's NO WORRIES 383N

MC904327 // CTP 383N // 04-Mar-25

Sire

KEYS BALLYHOO 77D
KEYS DUDE 223J
 MISS KEY NORA 94Z

Dam

HVA FORTUNE 5F
TURNBULL'S MISS SKY 383K
 CTP MISS COWGIRL 545B

EPDs	CE	BW	WW	YW	M
	5.8	-0.2	44	92	20
PERF	Act BW	Act WW	Act YW		
	95	650	1030		

Polled



RS*Sparrows* **DEFAULT 255K**

MC844730 // SB 255K // 14-Feb-22

Sire

BHD STOUT X41

SPARROWS ALVAREZ 620D

SPARROWS SALSA 67Z

Dam

WINN MANS LANZA 610S

SPARROWS DAWN 134F

SPARROWS DAWN 134A

PERF	Act BW	Act WW	Act YW	EPDs	CE	BW	WW	YW	M
	105	889	1337		3.4	2.8	78	148	25

Polled

**SPARROWS DEFAULT 255K****LOT 26****26***Turnbull's* **NBA 432N**

MC901371 // CTP 432N // 01-Feb-25

Sire

SPARROWS ALVAREZ 620D

SPARROWS DEFAULT 255K

SPARROWS DAWN 134F

Dam

GLM RED TITAN 27X

CTP MISS ACTIVE 432A

CTP MISS MAHOGONY 71U

EPDs	CE	BW	WW	YW	M
	2.8	1.4	78	140	21
PERF	Act BW	Act WW	Act YW		
	104	1030	1385		

Homo Polled, retaining 1/3 semen interest



LOT 27

27

Turnbull's NITTY GRITTY 83N

MC904179 // CTP 83N // 03-Feb-25

Sire

SPARROWS ALVAREZ 620D
SPARROWS DEFAULT 255K
 SPARROWS DAWN 134F

Dam

ELDER'S HERNANDEZ 17E
TURNBULL'S MISS AMELIA 83G
 CTP MISS SHEA 651C

EPDS	CE	BW	WW	YW	M
	5.9	0.6	69	119	19
PERF	Act BW		Act WW		Act YW
	89		906		1150

Homo Polled





LOT 28

28

Turnbull's NEWS-WORTHY 65N

MC901300 // CTP 65N // 19-Jan-25

Sire

SPARROWS ALVAREZ 620D

SPARROWS DEFAULT 255K

SPARROWS DAWN 134F

Dam

CEDARLEA SHOELESS JOE 83C

TURNBULL'S MISS REGAN 65G

TURNBULLS DECOR 736D

EPDs	CE	BW	WW	YW	M
	2.2	3.3	73	146	22
PERF	Act BW	Act WW	Act YW		
	108	956	1345		

Homo Polled





LOT 29

29 *Turnbull's* NICKLEBACK 9N

MC901307 // CTP 9N // 20-Jan-25

Sire

Dam

SPARROWS ALVAREZ 620D
SPARROWS DEFAULT 255K
 SPARROWS DAWN 134F

CEDARLEA SHOELESS JOE 83C
TURNBULL'S MISS AVA 9G
 RTP MISS PORCELIN 156U

PERF	Act BW	Act WW	Act YW	EPDs	CE	BW	WW	YW	M
	92	944	1380		-2.1	1.8	85	142	24

Heterozygous Polled



LOT 30

30 *Turnbull's* NEWS-MAN 250N

MC901316 // CTP 250N // 23-Jan-25

Sire

Dam

SPARROWS ALVAREZ 620D
SPARROWS DEFAULT 255K
 SPARROWS DAWN 134F

JWX SILVER BUCKLE 524U
JWX BUCKLE BUNNY 250B
 JWXC ECHO 5150Z

PERF	Act BW	Act WW	Act YW	EPDs	CE	BW	WW	YW	M
	109	1005	1380		0.6	3.3	85	165	30

Heterozygous Polled



LOT 31

31 *Turnbull's* NEMO 717N

MC901324 // CTP 717N // 25-Jan-25

Sire

Dam

SPARROWS ALVAREZ 620D
SPARROWS DEFAULT 255K
 SPARROWS DAWN 134F

CEDARLEA GRID MASTER 22Z
TURNBULLS DEAR 717D
 CTP MISS WINK 29W

PERF	Act BW	Act WW	Act YW	EPDs	CE	BW	WW	YW	M
	87	880	1320		-0.3	3.2	65	128	19

Polled



LOT 32

32 *Turnbull's* **NORTHERN LIGHTS 509N**

MC901348 // CTP 509N // 30-Jan-25

Sire

Dam

SPARROWS ALVAREZ 620D

MLM LAREDO 3Y

SPARROWS DEFAULT 255K

MISS CTP SUNSHINE 509B

SPARROWS DAWN 134F

RTP MISS MOONLIGHT 10W

PERF	Act BW	Act WW	Act YW	EPDs	CE	BW	WW	YW	M
	111	934	1335		0.3	3.3	69	124	24

Polled

33 *Turnbull's* **NATE 747N**

MC904218 // CTP 747N // 05-Feb-25

Sire

Dam

SPARROWS ALVAREZ 620D

PLEASANT DAWN MVP 316Y

SPARROWS DEFAULT 255K

TURNBULLS DELIGHT 747D

SPARROWS DAWN 134F

CTP MISS POTPOURRI 334Z

PERF	Act BW	Act WW	Act YW	EPDs	CE	BW	WW	YW	M
	106	892	1230		3.4	1.3	67	125	24

Polled



LOT 33



LOT 34

34 *Turnbull's* **NEON MOON 107N**

MC904233 // CTP 107N // 07-Feb-25

Sire

Dam

SPARROWS ALVAREZ 620D

HVA FORTUNE 5F

SPARROWS DEFAULT 255K

TURNBULL'S MISS APRIL 107H

SPARROWS DAWN 134F

MISS CTP SUNSHINE 509B

PERF	Act BW	Act WW	Act YW	EPDs	CE	BW	WW	YW	M
	95	832	1290		7	0.9	71	138	24

35 *Turnbull's* **NEWEST 812N**

MC910436 // CTP 812N // 15-Feb-25

Sire

Dam

SPARROWS ALVAREZ 620D

SVY WIZARD 707E

SPARROWS DEFAULT 255K

PLEASANTDAWN BELLA 812G

SPARROWS DAWN 134F

PLEASANTDAWN LADY 912A

PERF	Act BW	Act WW	Act YW	EPDs	CE	BW	WW	YW	M
	110	840	1155		-3.5	4.1	66	123	22

Heterozygous Polled/Scurred

Polled



LOT 35



LOT 36

36

Turnbull's NIXON 106N

MC904255 // CTP 106N // 11-Feb-25

Sire

SPARROWS ALVAREZ 620D
SPARROWS DEFAULT 255K
 SPARROWS DAWN 134F

Dam

ELDER'S HERNANDEZ 17E
TURNBULL'S MISS AMAZON 106H
 LAE CLASSY 598C

EPDs	CE	BW	WW	YW	M
	2.9	1.6	76	130	23
PERF	Act BW	Act WW	Act YW		
	96	908	1355		

Heterozygous Polled





LOT 37

37 *Turnbull's* NO LIMITS 813N

MC904236 // CTP 813N // 08-Feb-25

Sire

Dam

SPARROWS ALVAREZ 620D
SPARROWS DEFAULT 255K
 SPARROWS DAWN 134F

PLEASANT DAWN TRACKER 15A
TURNBULL'S MISS DARLA 813E
 CTP MISS CHESTNUT 127T

PERF	Act BW	Act WW	Act YW	EPDs	CE	BW	WW	YW	M
	113	960	1290		-2.4	4	75	136	27

Polled



LOT 38

38 *Turnbull's* NOBLE-HEARTED 97N

MC904266 // CTP 97N // 14-Feb-25

Sire

Dam

SPARROWS ALVAREZ 620D
SPARROWS DEFAULT 255K
 SPARROWS DAWN 134F

VIKSE OVER TIME 104A
PLEASANT DAWNOVERTOP97D
 PLEASANT DAWN KATTY 147Z

PERF	Act BW	Act WW	Act YW	EPDs	CE	BW	WW	YW	M
	99	790	1230		5.2	0.5	68	110	15

Homo Polled



39

Turnbull's NOUGAT 135N

MC910893 // CTP 135N // 23-Feb-25

Sire

Dam

SPARROWS ALVAREZ 620D

HVA FORTUNE 5F

SPARROWS DEFAULT 255K

TURNBULL'S MISS FAWN 135H

SPARROWS DAWN 134F

TURNBULLS DECADENT 732D

PERF	Act BW	Act WW	Act YW	EPDs	CE	BW	WW	YW	M
	97	900	1255		2.1	2	78	141	22

Polled



LOT 39

40

Turnbull's NELSON CRUZ 154N

MC904312 // CTP 154N // 23-Feb-25

Sire

Dam

SPARROWS ALVAREZ 620D

CEDARLEA SHOELESS JOE 83C

SPARROWS DEFAULT 255K

TURNBULL'S MISS OPTIMIST 154H

SPARROWS DAWN 134F

CTP MISS KIMBERLY 225Y

PERF	Act BW	Act WW	Act YW	EPDs	CE	BW	WW	YW	M
	88	722	1075		7.6	-1.6	57	110	22

Polled



LOT 40





CEDARLEA YELLOWSTONE 184H

RS Cedarlea YELLOWSTONE 184H

MC789030 // LEO 184H // 27-Feb-20

Sire

Dam

LT LEDGER 0332 P
SOS APEX PLD 139F
 TMJF BERYLE 447B

HRJ MR APACHE 3A
CEDARLEA WREN 91D
 CEDARLEA WREN 30Z

PERF	Act BW	Act WW	Act YW	EPDs	CE	BW	WW	YW	M
	99	810	1200		3.2	-0.6	77	124	18

Polled



Wright

LOT 41

41

Turnbull's NERVES OF STEEL 819N

MC904302 // CTP 819N // 18-Feb-25

Sire

Dam

SOS APEX PLD 139F
CEDARLEA YELLOWSTONE 184H
 CEDARLEA WREN 91D

TURNBULL'S BUCKLE-UP 324B
TURNBULL'S MISS JILLANA 819E
 CTP MISS LACEY 622C

EPDs	CE	BW	WW	YW	M
	6.6	-1.7	66	114	18
PERF	Act BW	Act WW	Act YW		
	88	960	1330		

Homo Polled



LOT 42

42

Turnbull's NO FEAR 608N

MC901306 // CTP 608N // 20-Jan-25

Sire

SOS APEX PLD 139F
CEDARLEA YELLOWSTONE 184H
 CEDARLEA WREN 91D

Dam

HC ANCHOR 306A
CTP MISS ALLY 608C
 CTP MISS AMULET 419A

EBDS	CE	BW	WW	YW	M
	8.2	-2.7	58	109	18
PERF	Act BW		Act WW		Act YW
	94		948		1360

Homo Polled





LOT 43

43 *Turnbull's* NIP'N TUCK 22N

MC901292 // CTP 22N // 03-Jan-25

Sire

Dam

SOS APEX PLD 139F

PLEASANT DAWN MVP 316Y

CEDARLEA YELLOWSTONE 184H

TURNBULL'S AUDREY 22G

CEDARLEA WREN 91D

PLEASANTDAWNLADY 803A

PERF	Act BW	Act WW	Act YW	EPDs	CE	BW	WW	YW	M
	70	812	1165		13.5	-5.1	58	112	21

Polled



LOT 44

44 *Turnbull's* NAILED IT 941N

MC901369 // CTP 941N // 01-Feb-25

Sire

Dam

SOS APEX PLD 139F

CEDARLEA LINCOLN 28D

CEDARLEA YELLOWSTONE 184H

TURNBULL'S MISS JENNY 941F

CEDARLEA WREN 91D

TURNBULLS DANDY 707D

PERF	Act BW	Act WW	Act YW	EPDs	CE	BW	WW	YW	M
	99	940	1350		7	-1	75	124	17

Homo Polled



LOT 45

45 *Turnbull's* NIGHTWATCH 47N

MC901373 // CTP 47N // 02-Feb-25

Sire

Dam

SOS APEX PLD 139F

JWX DAYTIME 1047D

CEDARLEA YELLOWSTONE 184H

TURNBULL'S MISS CATHY 47G

CEDARLEA WREN 91D

CTP MISS FABULOUS 540B

PERF	Act BW	Act WW	Act YW	EPDs	CE	BW	WW	YW	M
	101	952	1385		-0.2	0.6	79	132	20

Heterozygous Polled/Scurred



LOT 46

46 *Turnbull's* **NEXT GENERATION 10N**

MC901314 // CTP 10N // 22-Jan-25

Sire

SOS APEX PLD 139F

CEDARLEA YELLOWSTONE 184H

CEDARLEA WREN 91D

Dam

CEDARLEA SHOELESS JOE 83C

TURNBULL'S MISS ELLA 10G

RTP MISS PORCELIN 156U

PERF	Act BW	Act WW	Act YW	EPDs	CE	BW	WW	YW	M
	107	1020	1445		-2.9	4.2	86	144	22

Homo Polled

47 *Turnbull's* **NICHE 95N**

MC904226 // CTP 95N // 05-Feb-25

Sire

SOS APEX PLD 139F

CEDARLEA YELLOWSTONE 184H

CEDARLEA WREN 91D

Dam

JWX DAYTIME 1047D

TURNBULL'S MARIAH-CAREY 95G

CTP MISS MIRANDA 433A

PERF	Act BW	Act WW	Act YW	EPDs	CE	BW	WW	YW	M
	110	926	1320		-2.4	1.9	74	127	21

Polled



LOT 47



LOT 48

48

Turnbull's NHL 43N

MC904185 // CTP 43N // 03-Feb-25

Sire

SOS APEX PLD 139F

CEDARLEA YELLOWSTONE 184H

CEDARLEA WREN 91D

Dam

STEPPLER BLUE PRINT 64C

TURNBULL'S PHOENIX 43G

CTP MISS SWIFT 421A

EPDS	CE	BW	WW	YW	M
	2.8	1.8	76	112	34
PERF	Act BW	Act WW	Act YW		
	100	938	1340		

Homo Polled





LOT 49

49

Turnbull's NOVELTY 507N

MC904227 // CTP 507N // 05-Feb-25

Sire

SOS APEX PLD 139F

CEDARLEA YELLOWSTONE 184H

CEDARLEA WREN 91D

Dam

PLEASANT DAWN MVP 316Y

MISS CTP DAWN 507B

CTP MISS CLINIQUE 308Z

EPDs	CE	BW	WW	YW	M
	10.2	-4.3	61	120	30
PERF	Act BW	Act WW	Act YW		
	92	880	1275		

Homo Polled





LOT 50

50 *Turnbull's* NEW HOLLAND 739N

MC904243 // CTP 739N // 09-Feb-25

Sire

SOS APEX PLD 139F

CEDARLEA YELLOWSTONE 184H

CEDARLEA WREN 91D

Dam

HC ANCHOR 306A

TURNBULLS DAWNA 739D

CTP MISS SASHA 521B

PERF	Act BW	Act WW	Act YW	EPDs	CE	BW	WW	YW	M
	76	766	1145		14	-5.7	51	97	18

Polled



LOT 51

51 *Turnbull's* NEXUS 885N

MC904323 // CTP 885N // 28-Feb-25

Sire

SOS APEX PLD 139F

CEDARLEA YELLOWSTONE 184H

CEDARLEA WREN 91D

Dam

TURNBULL'S COWBOY-UP 912C

TURNBULL'S MISS SHELLY 885E

MISS CTP RACHELLE 511B

PERF	Act BW	Act WW	Act YW	EPDs	CE	BW	WW	YW	M
	112	870	1220		-1.3	1.5	72	119	20

Polled





LOT 52

52

Turnbull's NEYMAR 145N

MC904339 // CTP 145N // 23-Mar-25

Sire

SOS APEX PLD 139F

CEDARLEA YELLOWSTONE 184H

CEDARLEA WREN 91D

Dam

HVA FORTUNE 5F

TURNBULL'S MISS MERIT 145H

TURNBULLS DECOR 736D

EPDs	CE	BW	WW	YW	M
	5	-0.1	67	117	19
PERF	Act BW	Act WW	Act YW		
	93	714	1020		

Polled





LOT 53

53 *Turnbull's* **NALDO 51N**

MC904329 // CTP 51N // 06-Mar-25

Sire

Dam

SOS APEX PLD 139F

PLEASANT DAWN CHISUM 216A

CEDARLEA YELLOWSTONE 184H

PLEASANT DAWN CHISUM 51D

CEDARLEA WREN 91D

PLEASANT DAWN REIA52U

PERF	Act BW	Act WW	Act YW	EPDs	CE	BW	WW	YW	M
	108	872	1235		-0.2	0.8	77	127	19

Polled



LOT 54

54 *Turnbull's* **NIGHTRIDER 558N**

MC904332 // CTP 558N // 11-Mar-25

Sire

Dam

SOS APEX PLD 139F

PLEASANT DAWN MVP 316Y

CEDARLEA YELLOWSTONE 184H

CTP MISS CHLOE 558B

CEDARLEA WREN 91D

CTP MISS VOLUMINOUS 307Z

PERF	Act BW	Act WW	Act YW	EPDs	CE	BW	WW	YW	M
	96	806	1190		8.2	-2.9	70	124	26

Polled



LOT 55

55 *Turnbull's* **NEW MAN 171N**

MC904301 // CTP 171N // 18-Feb-25

Sire

Dam

BRIMNER BULL 44J

CEDARLEA THE COUNT 175F

CEDARLEA BADLANDS 25L

CEDARLEA WINTER 171J

CEDARLEA TINSEL 213J

CEDARLEA WINTER 19C

PERF	Act BW	Act WW	Act YW	EPDs	CE	BW	WW	YW	M
	104	1010	1375		6.3	0.2	82	142	28

Homo Polled

RS*Stepler* **MAGNUM 99G**

MC772878 // DSY 99G // 08-Jan-19

*Sire**Dam*

WC DOUBLETREE 2009 P

STEPPLER JACKSONVILLE335Z

PRO-CHAR WINCHESTER 6D**STEPPLER TAYLOR 43E**

PRO-CHAR WINNING GOAL 51B

STEPPLER TAYLOR 105C

PERF	Act BW	Act WW	Act YW	EPDs	CE	BW	WW	YW	M
	93	742	n/a		15.4	-7.1	48	100	36

Polled

**STEPPLER MAGNUM 99G****LOT 56****56***Turnbull's* **NEVADA 441N**

MC901294 // CTP 441N // 10-Jan-25

*Sire**Dam*

PRO-CHAR WINCHESTER 6D

C2 PHAROAH 79F

STEPPLER MAGNUM 99G**TURNBULL'S MISS BRIELLE 441L**

STEPPLER TAYLOR 43E

TURNBULL'S JACKIE 942F

EPDs	CE	BW	WW	YW	M
	9.8	-1.5	53	98	35
PERF	Act BW	Act WW	Act YW		
	83	838	1290		

Homo Polled



LOT 57

57 *Turnbull's* NIGHTCRAWLER 459N

MC904003 // CTP 459N // 02-Feb-25

Sire

PRO-CHAR WINCHESTER 6D
STEPPLER MAGNUM 99G
STEPPLER TAYLOR 43E

Dam

CEDARLEA YELLOWSTONE 184H
TURNBULL'S MISS LUXOR 459L
PLEASANTDAWN JASMINE 814C

PERF	Act BW	Act WW	Act YW	EPDs	CE	BW	WW	YW	M
	84	710	1095		9.8	-3.5	51	101	28

Polled

58 *Turnbull's* NIFTY 411N

MC904244 // CTP 411N // 09-Feb-25

Sire

PRO-CHAR WINCHESTER 6D
STEPPLER MAGNUM 99G
STEPPLER TAYLOR 43E

Dam

CEDARLEA YELLOWSTONE 184H
TURNBULL'S MISS LEAH 411L
ELDER'S AGATHA 8008F

PERF	Act BW	Act WW	Act YW	EPDs	CE	BW	WW	YW	M
	93	718	1140		7	-2	60	110	22

Homo Polled



LOT 58

59 *Turnbull's* NOBLEMAN 473N

MC901347 // CTP 473N // 30-Jan-25

Sire

Dam

PRO-CHAR WINCHESTER 6D
STEPPLER MAGNUM 99G
 STEPPLER TAYLOR 43E

CEDARLEA YELLOWSTONE 184H
TURNBULL'S MISS MONTANA 473L
 MXS LANDMARK'S MAID 570C

PERF	Act BW	Act WW	Act YW	EPDs	CE	BW	WW	YW	M
99	740	1155			8	-1.6	54	101	26

Polled



LOT 59

60 *Turnbull's* NORRIS 424N

MC910897 // CTP 424N // 09-Feb-25

Sire

Dam

PRO-CHAR WINCHESTER 6D
STEPPLER MAGNUM 99G
 STEPPLER TAYLOR 43E

KEYS DUDE 223J
TURNBULL'S MISS LANA 424L
 TURNBULL'S MISS RAYLEEN 180H

PERF	Act BW	Act WW	Act YW	EPDs	CE	BW	WW	YW	M
83	684	1045			13.4	-4.7	48	103	26

Polled



LOT 60

61 *Turnbull's* NONSENSE 429N

MC904261 // CTP 429N // 13-Feb-25

Sire

Dam

PRO-CHAR WINCHESTER 6D
STEPPLER MAGNUM 99G
 STEPPLER TAYLOR 43E

CEDARLEA YELLOWSTONE 184H
TURNBULL'S MISS LAUREN 429L
 CTP MISS KELLY 501B

PERF	Act BW	Act WW	Act YW	EPDs	CE	BW	WW	YW	M
84	652	1055			11.9	-4.3	49	99	27

Polled



LOT 61



HOPEWELL MAHOMES 15L

RS *Hopewell* MAHOMES 15L

MC859601 // AMB 15L // 09-Jan-23

Sire

Dam

SPARROWS ESTEVEZ 471B
HRJ FAN FAVOURITE 804F
 HRJ MISS PARIS 7S

LT AUTHORITY 7229 PLD
HOPEWELL DAISY 5H
 TRI-N DAISY PLD 753B

PERF	Act BW	Act WW	Act YW	EPDs	CE	BW	WW	YW	M
	95	875	1420		5.8	0.8	64	115	25

Polled



LOT 62

62

Turnbull's NITROGEN 264N

MC901341 // CTP 264N // 28-Jan-25

Sire

Dam

HRJ FAN FAVOURITE 804F
HOPEWELL MAHOMES 15L
 HOPEWELL DAISY 5H

HVA FORTUNE 5F
TURNBULL'S AMBER 264J
 TURNBULLS DELICACY 740D

EPDs	CE	BW	WW	YW	M
	0.9	3.5	62	110	35
PERF	Act BW	Act WW	Act YW		
	97	900	1215		

Homo Polled



LOT 63

63

Turnbull's NEW HORIZON 269N

MC901346 // CTP 269N // 29-Jan-25

Sire

HRJ FAN FAVOURITE 804F
HOPEWELL MAHOMES 15L
 HOPEWELL DAISY 5H

Dam

HVA FORTUNE 5F
TURNBULL'S MISS JOSIE 269J
 CTP MISS TAKE-OFF 324Z

EPDs	CE	BW	WW	YW	M
	9.9	-2.6	54	107	27
PERF	Act BW	Act WW	Act YW		
	90	810	1235		

Heterozygous Polled





LOT 64

64 *Turnbull's* **NEXT-UP 258N**

MC901297 // CTP 258N // 14-Jan-25

Sire

Dam

HRJ FAN FAVOURITE 804F
HOPEWELL MAHOMES 15L
 HOPEWELL DAISY 5H

ELDER'S HERNANDEZ 17E
TURNBULL'S MISS STACIE 258J
 CTP MISS STROEVE COW 223Y

PERF	Act BW	Act WW	Act YW	EPDs	CE	BW	WW	YW	M
	77	806	1145		12.4	-3.2	49	93	25

Polled



LOT 65

65 *Turnbull's* **NONCHALANT 235N**

MC901331 // CTP 235N // 26-Jan-25

Sire

Dam

HRJ FAN FAVOURITE 804F
HOPEWELL MAHOMES 15L
 HOPEWELL DAISY 5H

HVA FORTUNE 5F
TURNBULL'S MISS VICKY 235J
 CTP MISS VOLUMINOUS 307Z

PERF	Act BW	Act WW	Act YW	EPDs	CE	BW	WW	YW	M
	100	784	1125		5.3	1.4	65	126	21

Homo Polled



LOT 66

66 *Turnbull's* **NEELY 247N**

MC901355 // CTP 247N // 30-Jan-25

Sire

Dam

HRJ FAN FAVOURITE 804F
HOPEWELL MAHOMES 15L
 HOPEWELL DAISY 5H

C2 PHAROAH 79F
TURNBULL'S MISS JANET 247J
 TURNBULL'S MISS ARIANNA 973F

PERF	Act BW	Act WW	Act YW	EPDs	CE	BW	WW	YW	M
	92	852	1230		5.1	-1.8	65	115	24

Homo Polled

67

Turnbull's NEON 254N

MC904259 // CTP 254N // 12-Feb-25

Sire

Dam

HRJ FAN FAVOURITE 804F

HVA FORTUNE 5F

HOPEWELL MAHOMES 15L

TURNBULL'S MAURA 254J

HOPEWELL DAISY 5H

CTP MISS BELLE 638C

PERF	Act BW	Act WW	Act YW	EPDs	CE	BW	WW	YW	M
	108	820	1130		-0.4	2.6	61	116	23

Polled



LOT 67

68

Turnbull's NOAH 260N

MC904306 // CTP 260N // 20-Feb-25

Sire

Dam

HRJ FAN FAVOURITE 804F

ELDER'S HERNANDEZ 17E

HOPEWELL MAHOMES 15L

TURNBULL'S MISS AMELIA 260J

HOPEWELL DAISY 5H

CTP MISS AMULET 419A

PERF	Act BW	Act WW	Act YW	EPDs	CE	BW	WW	YW	M
	107	884	1210		6.9	0.5	65	109	29

Polled



LOT 68





LOT 69

69 *Turnbull's* NEPTUNE 206N

MC904308 // CTP 206N // 21-Feb-25

Sire

Dam

HRJ FAN FAVOURITE 804F
HOPEWELL MAHOMES 15L
HOPEWELL DAISY 5H

TURNBULLS DUTY-FREE 358D
TURNBULL'S OLIVIA-FAYE 206J
GLM ANNIE 14A

PERF	Act BW	Act WW	Act YW	EPDs	CE	BW	WW	YW	M
	102	892	1195		5.3	0.9	76	130	22

Homo Polled

70 *Turnbull's* NOT TODAY 13N

MC904309 // CTP 13N // 23-Feb-25

Sire

Dam

HRJ FAN FAVOURITE 804F
HOPEWELL MAHOMES 15L
HOPEWELL DAISY 5H

TURNBULL'S ELITE 322E
CEDARLEA TAUPE 13J
CEDARLEA TAUPE 140G

PERF	Act BW	Act WW	Act YW	EPDs	CE	BW	WW	YW	M
	112	860	1235		2.5	1.3	70	125	29

Polled



LOT 70

RS HC JAGERMEISTER 160J

MC811953 // HC 160J // 18-Jan-21

Sire

Dam

LT JOURNEY 5208 PLD
LT RANSOM 8644
 LT SHEILA 337 PLD

DCR MR DUAL-THREAT D11
HC GEORGIA 977G
 HC WISHFUL THINKING 953W

PERF	Act BW	Act WW	Act YW	EPDs	CE	BW	WW	YW	M
	86	720	n/a		6.4	-0.9	71	122	21

Homo Polled



HC JAGERMEISTER 160J

71 Turnbull's NOTEWORTHY 903N

MC901351 // CTP 903N // 30-Jan-25

Sire

Dam

LT RANSOM 8644
HC JAGERMEISTER 160J
 HC GEORGIA 977G

PLEASANT DAWN MVP 316Y
TURNBULL'S MISS BRITNEY 903F
 RTP MISS PORCELIN 156U

PERF	Act BW	Act WW	Act YW	EPDs	CE	BW	WW	YW	M
	105	976	1360		1.4	0.6	75	132	27

Polled



LOT 71

72 Turnbull's NEWT 666N

MC901362 // CTP 666N // 31-Jan-25

Sire

Dam

LT RANSOM 8644
HC JAGERMEISTER 160J
 HC GEORGIA 977G

PLEASANT DAWN TRACKER 15A
CTP MISS ROBIN 666C
 CTP MISS OUTRAGEOUS 328Z

PERF	Act BW	Act WW	Act YW	EPDs	CE	BW	WW	YW	M
	107	902	1255		-1.2	1.8	67	114	28

Polled



LOT 72

Welcome

FROM A&L ROBBINS RANCHING LTD.

Hello everyone!

It is with great pleasure that we welcome you to our annual bull sale. We have a good selection of both Red and Black Angus bulls: long yearling bulls and 2-year-old bulls.

The main priority in our breeding program continues to be providing bulls that have calving ease, and with excellent growth potential. Sound feet are also a priority.

We invite you to come to our farm to see the bulls. All of our bulls can be seen at the farm until sale day. Viewing can also be done on sale day at the Turnbull farm. Thank you to Curtis and Nanette for hosting this sale and inviting us to be part of it.

Thank you to all of our previous buyers and to anyone who has bid on our bulls. We appreciate your support and always welcome feedback. We are happy to answer your questions at any time.

We are looking forward to seeing you at the sale on March 7th.

Alvin, Lorraine and Family

Alvin and Lorraine and family

Alvin – 403-627-7398

David – 403-627-9398

Carolyn – 403-627-8237





LOT 73

73

C Robbins FORTITUDE 17M

2365028 // RCL 17M // 26-Mar-24

Sire

ARY DIRECT DEPOSIT 602D
CROBBINS FORTITUDE 8G
 ROBBINS MAYFLOWER 220E

Dam

STANDARD HILL FINALIST 342A
ROBBINS MIRACLE 202G
 ROBBINS MIRACLE 161Y

EPDs	CE	BW	WW	YW	M	MCE
	2	2.9	46	84	19	10
PERF	Act BW	Adj WW	Adj YW			
	79	664	1095			



Gerald 1928 Morgan Place



LOT 74

74

Red Robbins SLOWBURN 12M

2399684 // RAL 12M // 19-Oct-24

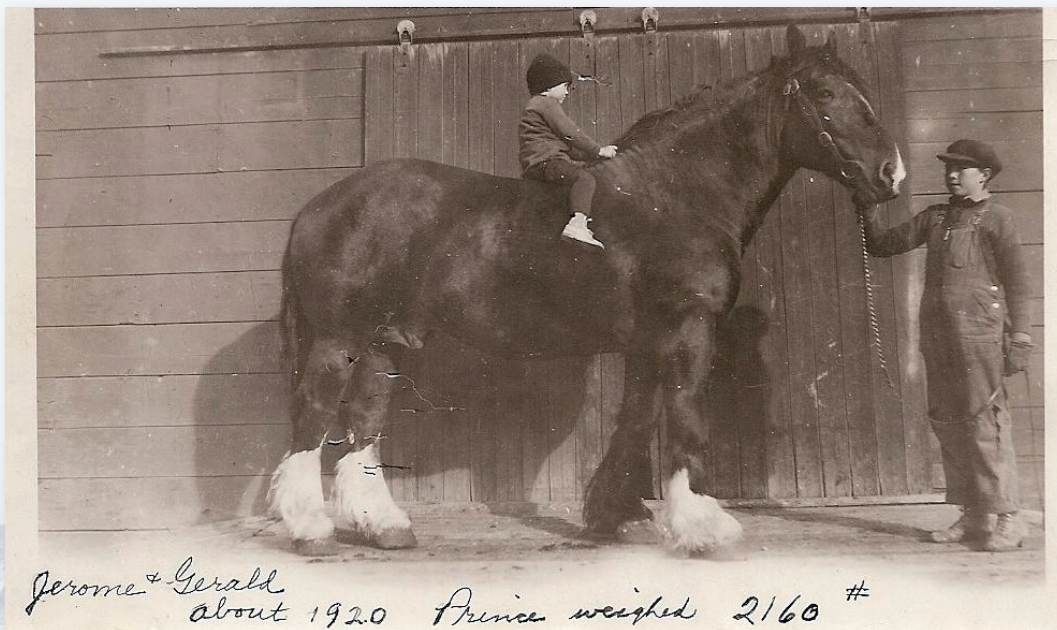
Sire

RED LWNBRG SLOWBURN 102H
RED LWNBRG SLOWBURN 150K
 RED LWNBRG MS MADONA 39H

Dam

RED COUNT RIDGE ROBUST 61F
RED ROBBINS CAROL 5H
 RED RAL ROBBINS CAROL 22Z

EPDs	CE	BW	WW	YW	M	MCE
	2	2.4	46	77	24	7
PERF	Act BW	Adj WW	Adj YW			
	93	703	1246			



*Jerome + Gerald
 about 1920 Prince weighed 2160 #*

Registered Shire Stallion. Used as a stud around the Pincher Creek district.



LOT 75

75

Red Robbins SLOWBURN 20M

2399691 // RAL 20M // 21-Oct-24

Sire

RED LWNBRG SLOWBURN 102H
RED LWNBRG SLOWBURN 150K
 RED LWNBRG MS MADONA 39H

Dam

RED YCR EURO 1737E
RED ROBBINS CONTESSA 19J
 RED ROBBINS CONTESSA 3A

EPDs	CE	BW	WW	YW	M	MCE
	-2	3.4	58	95	26	3
PERF	Act BW	Adj WW	Adj YW			
	93	732	1300			





LOT 76

76 *Red Robbins* SLOWBURN 13M

2399685 // RAL 13M // 20-Oct-24

Sire

Dam

RED LWNBRG SLOWBURN 102H

RED YCR EURO 1737E

RED LWNBRG SLOWBURN 150K

RED ROBBINS PEGGY 7J

RED LWNBRG MS MADONA 39H

RED ROBBINS PEGGY 20Y

PERF	Act BW	Adj WW	Adj YW	EPDs	CE	BW	WW	YW	M	MCE
	94	735	1287		0	3.1	52	87	28	5



LOT 77

77 *Red Robbins* SLOWBURN 18M

2399689 // RAL 18M // 20-Oct-24

Sire

Dam

RED LWNBRG SLOWBURN 102H

RED COUNT RIDGE VOLTAGE 51G

RED LWNBRG SLOWBURN 150K

RED ROBBINS TIDY BEE 2J

RED LWNBRG MS MADONA 39H

RED ROBBINS TIDY BEE 67D

PERF	Act BW	Adj WW	Adj YW	EPDs	CE	BW	WW	YW	M	MCE
	83	707	1225		2	1.6	49	82	27	5



LOT 78

78 *Red Robbins* SLOWBURN 21M

2399692 // RAL 21M // 21-Oct-24

Sire

Dam

RED LWNBRG SLOWBURN 102H

RED COUNT RIDGE VOLTAGE 51G

RED LWNBRG SLOWBURN 150K

RED ROBBINS RED WING 38J

RED LWNBRG MS MADONA 39H

RED ROBBINS RED WING 41X

PERF	Act BW	Adj WW	Adj YW	EPDs	CE	BW	WW	YW	M	MCE
	95	615	1201		-1	3.2	42	79	21	4



LOT 79

79

Red Robbins SLOWBURN 25M

2399695 // RAL 25M // 21-Oct-24

Sire

RED LWNBRG SLOWBURN 102H
RED LWNBRG SLOWBURN 150K
 RED LWNBRG MS MADONA 39H

Dam

RED ROBBINS VISION 28G
RED ROBBINS CHER 6J
 RED ROBBINS CHER 60G

EPDs	CE	BW	WW	YW	M	MCE
	1	2.2	50	84	26	5
PERF	Act BW	Adj WW	Adj YW			
	93	708	1260			





LOT 80

80

Red Robbins SLOWBURN 31M

2399701 // RAL 31M // 22-Oct-24

Sire

RED LWNBRG SLOWBURN 102H
RED LWNBRG SLOWBURN 150K
 RED LWNBRG MS MADONA 39H

Dam

RED YCR EURO 1737E
RED ROBBINS CONTESSA 40H
 ROBBINS CONTESSA 10W

EPDs	CE	BW	WW	YW	M	MCE
	-2	3.7	52	89	27	3
PERF	Act BW	Adj WW	Adj YW			
	97	726	1332			



81 *Red Robbins* SLOWBURN 38M

2399706 // RAL 38M // 02-Nov-24

Sire

Dam

RED LWNBRG SLOWBURN 102H
RED LWNBRG SLOWBURN 150K
 RED LWNBRG MS MADONA 39H

RED ROBBINS FINALIST 28F
RED ROBBINS PRIDE 37H
 RED ROBBINS PRIDE 55F

PERF	Act BW	Adj WW	Adj YW	EPDs	CE	BW	WW	YW	M	MCE
	89	705	1234		1	2.1	48	76	25	6



82

Robbins INTERNATIONAL 204M

2365041 // RAL 204M // 16-Mar-24

Sire

Dam

C & N INTERNATIONAL 31C
C & N INTERNATIONAL 159E
 C & N ELDORENE 4S

ARY DIRECT DEPOSIT 602D
ROBBINS ERROLLINE 150F
 ROBBINS ERROLLINE 140D

EPDs	CE	BW	WW	YW	M	MCE
	10	-0.6	60	120	24	11
PERF	Act BW	Adj WW	Adj YW			
	70	725	1282			



LOT 83

83 *C Robbins* INTERNATIONAL 4M

2365013 // RCL 4M // 08-Mar-24

Sire

C & N INTERNATIONAL 31C
C & N INTERNATIONAL 159E
 C & N ELDORENE 4S

Dam

STANDARD HILL FINALIST 342A
ROBBINS ERROLLINE 212G
 ROBBINS ERROLLINE 137C

PERF	Act BW	Adj WW	Adj YW	EPDs	CE	BW	WW	YW	M	MCE
	78	684	1187		7	1.1	51	100	22	8



LOT 84

84

Robbins INTERNATIONAL 88M

2399741 // RAL 88M // 25-Oct-24

Sire

C & N INTERNATIONAL 31C
C & N INTERNATIONAL 159E
 C & N ELDORENE 4S

Dam

CCL RACHIS 78X
ROBBINS LASSIE 162C
 ROBBINS LASSIE 133S

EPDs	CE	BW	WW	YW	M	MCE
	5	1	47	89	28	8
PERF	Act BW	Adj WW	Adj YW			
	85	680	1228			



LOT 85

85

Robbins INTERNATIONAL 91M

2399744 // RAL 91M // 26-Oct-24

Sire

C & N INTERNATIONAL 31C
C & N INTERNATIONAL 159E
 C & N ELDORENE 4S

Dam

CCL RACHIS 78X
RAL ROBBINS BLACKCAP 103Z
 ROBBINS BLACKCAP 125J

EPDs	CE	BW	WW	YW	M	MCE
	1	2.2	52	100	23	4
PERF	Act BW	Adj WW	Adj YW			
	91	709	1315			

86

Robbins INTERNATIONAL 65M

2399722 // RAL 65M // 10-Oct-24

Sire

C & N INTERNATIONAL 31C
C & N INTERNATIONAL 159E
 C & N ELDORENE 4S

Dam

CCL RACHIS 78X
ROBBINS MIRACLE 129C
 ROBBINS MIRACLE 111M

PERF	Act BW	Adj WW	Adj YW	EPDs	CE	BW	WW	YW	M	MCE
	69	609	1132		11	-2	33	67	26	11



LOT 86



LOT 87

87 *Robbins* INTERNATIONAL 66M

2399723 // RAL 66M // 11-Oct-24

Sire

Dam

C & N INTERNATIONAL 31C

STANDARD HILL FINALIST 342A

C & N INTERNATIONAL 159E

ROBBINS PRIDE 169F

C & N ELDORENE 4S

ROBBINS PRIDE 146A

PERF	Act BW	Adj WW	Adj YW	EPDs	CE	BW	WW	YW	M	MCE
	84	714	1194		7	-0.2	53	91	25	7



LOT 88

88 *Robbins* INTERNATIONAL 69M

2399724 // RAL 69M // 11-Oct-24

Sire

Dam

C & N INTERNATIONAL 31C

ROBBINS FORTITUDE 133F

C & N INTERNATIONAL 159E

ROBBINS QUEEN 154H

C & N ELDORENE 4S

ROBBINS QUEEN 159D

PERF	Act BW	Adj WW	Adj YW	EPDs	CE	BW	WW	YW	M	MCE
	93	635	1217		4	1.5	50	98	21	6



LOT 89

89 *Robbins* INTERNATIONAL 80M

2399735 // RAL 80M // 17-Oct-24

Sire

Dam

C & N INTERNATIONAL 31C

ARY BRAVEHEART 6B

C & N INTERNATIONAL 159E

ROBBINS PRIDE 163F

C & N ELDORENE 4S

ROBBINS PRIDE 151B

PERF	Act BW	Adj WW	Adj YW	EPDs	CE	BW	WW	YW	M	MCE
	96	728	1358		5	1.8	61	117	25	6



LOT 90

90

Robbins 115K 53M

2399713 // RAL 53M // 07-Oct-24

Sire

C & N INTERNATIONAL 159E

ROBBINS INTERNATIONAL 115K
ROBBINS PRIDE 142W

Dam

C & N PRESIDENT 2G

ROBBINS ROYAL LADY 128K
ROBBINS ROYAL LADY 115A

EPDS	CE	BW	WW	YW	M	MCE
	5	1.9	52	92	26	8
PERF	Act BW	Adj WW	Adj YW			
	73	736	1293			

91

Robbins 115K 58M

2399716 // RAL 58M // 08-Oct-24

Sire

C & N INTERNATIONAL 159E

ROBBINS INTERNATIONAL 115K
ROBBINS PRIDE 142W

Dam

C & N PRESIDENT 2G

ROBBINS ROYAL LADY 123K
ROBBINS ROYAL LADY 155C

PERF	Act BW	Adj WW	Adj YW	EPDS	CE	BW	WW	YW	M	MCE
	75	796	1378		4	2	67	115	29	6



LOT 91



LOT 92

92 *Robbins* INTERNATIONAL 72M

2399727 // RAL 72M // 12-Oct-24

Sire

Dam

C & N INTERNATIONAL 159E
ROBBINS INTERNATIONAL 115K
 ROBBINS PRIDE 142W

C & N INTERNATIONAL 159E
ROBBINS BLACKBIRD 138K
 ROBBINS BLACKBIRD 152C

PERF	Act BW	Adj WW	Adj YW	EPDs	CE	BW	WW	YW	M	MCE
	76	600	1123		7	0	36	71	25	8



LOT 93

93 *Red Robbins* 16K 2M

2399675 // RAL 2M // 15-Oct-24

Sire

Dam

C & N INTERNATIONAL 159E
ROBBINS INTERNATIONAL 16K
 ROBBINS INDIGO 36B

RED YCR HACKYJACK 20128H
RED ROBBINS TIDY BEE 2K
 RED ROBBINS TIDY BEE 8H

PERF	Act BW	Adj WW	Adj YW	EPDs	CE	BW	WW	YW	M	MCE
	71	787	1350		9	-1.6	65	106	29	8



LOT 94

94 *Red Robbins* 16K 3M

2399676 // RAL 3M // 16-Oct-24

Sire

Dam

C & N INTERNATIONAL 159E
ROBBINS INTERNATIONAL 16K
 ROBBINS INDIGO 36B

RED COUNT RIDGE ROBUST 61F
RED ROBBINS CHER 24K
 RED ROBBINS CHER 60G

PERF	Act BW	Adj WW	Adj YW	EPDs	CE	BW	WW	YW	M	MCE
	74	791	1305		8	-1.4	61	96	27	10

95

Red Robbins 16K 4M

2399678 // RAL 4M // 16-Oct-24

Sire

Dam

C & N INTERNATIONAL 159E
ROBBINS INTERNATIONAL 16K
ROBBINS INDIGO 36B

RED YCR HACKYJACK 20128H
RED ROBBINS CONTESSA 1K
RED ROBBINS CONTESSA 3H

PERF	Act BW	Adj WW	Adj YW	EPDs	CE	BW	WW	YW	M	MCE
	72	797	1330		9	-1.6	67	106	28	7



LOT 95

96

Red Robbins 16K 11M

2399683 // RAL 11M // 20-Oct-24

Sire

Dam

C & N INTERNATIONAL 159E
ROBBINS INTERNATIONAL 16K
ROBBINS INDIGO 36B

RED COUNT RIDGE ROBUST 61F
RED ROBBINS PEGGY 13K
RED ROBBINS PEGGY 20Y

PERF	Act BW	Adj WW	Adj YW	EPDs	CE	BW	WW	YW	M	MCE
	79	731	1352		8	-0.2	58	103	26	9



LOT 96

97

Red Robbins 16K 19M

2399690 // RAL 19M // 21-Oct-24

Sire

Dam

C & N INTERNATIONAL 159E
ROBBINS INTERNATIONAL 16K
ROBBINS INDIGO 36B

RED YCR HACKYJACK 20128H
RED ROBBINS CONTESSA 11K
RED ROBBINS CONTESSA 40H

PERF	Act BW	Adj WW	Adj YW	EPDs	CE	BW	WW	YW	M	MCE
	64	707	1255		11	-2.4	48	81	27	9



LOT 97



LOT 98

98

C Robbins STELLAR 9M

2365019 // RCL 9M // 14-Mar-24

Sire

Dam

SITZ STELLAR 726D
RISING SUN STELLAR JEFF 6J
 RISING SUN EXT JENNY 15A

C & N INTERNATIONAL 159E
ROBBINS ERROLLINE 203K
 ROBBINS ERROLLINE 172C

PERF	Act BW	Adj WW	Adj YW	EPDs	CE	BW	WW	YW	M	MCE
	80	807	1214		1	2.2	58	104	21	4



LOT 99

99

Robbins STELLAR 95M

2399748 // RAL 95M // 28-Oct-24

Sire

Dam

SITZ STELLAR 726D
RISING SUN STELLAR JEFF 6J
 RISING SUN EXT JENNY 15A

CCL RACHIS 78X
ROBBINS MISSIE 127A
 ROBBINS MISSIE 121U

PERF	Act BW	Adj WW	Adj YW	EPDs	CE	BW	WW	YW	M	MCE
	93	683	1236		-2	2.8	53	98	20	5



RS *Red Lwnbrg* SLOWBURN 150K

2281620 // TED 150K // 25-Jan-22

Sire

Dam

RED U2 DOMINION

RED TOPHAM MCLOVIN 757E

RED LWNBRG SLOWBURN 102H

RED LWNBRG MS MADONA 39H

RED U2 FAVORITE 275F

RED LWNBRG FUSION 114C

PERF	Act BW	Adj WW	Adj YW	EPDs	CE	BW	WW	YW	M	MCE
	87	701	1262		1	2.8	46	80	23	5



RED LWNBRG SLOWBURN 150K

RS *Rising Sun* STELLAR JEFF 6J

2205726 // MIK 6J // 19-Feb-21

Sire

Dam

MOHNEN SUBSTANTIAL 272

N BAR EMULATION EXT

SITZ STELLAR 726D

RISING SUN EXT JENNY 15A

SITZ PRIDE 200B

RISING SUN PRECISE JENIFER 34P

PERF	Act BW	Adj WW	Adj YW	EPDs	CE	BW	WW	YW	M	MCE
	n/a	n/a	n/a		n/a	n/a	n/a	n/a	n/a	n/a



RISING SUN STELLAR JEFF 6J

RS *Robbins* INTERNATIONAL 115K

2294555 // RAL 115K // 12-Oct-22

Sire

Dam

C & N INTERNATIONAL 31C

CROWFOOT 3718N

C & N INTERNATIONAL 159E

ROBBINS PRIDE 142W

C & N ELDORENE 4S

ROBBINS PRIDE 122M

PERF	Act BW	Adj WW	Adj YW	EPDs	CE	BW	WW	YW	M	MCE
	88	662	1251		7	0.3	42	82	24	7



Lot 95 - 4M, son of RAL 16K

RS *Robbins* INTERNATIONAL 16K

2348435 // RAL 16K // 15-Oct-22

Sire

Dam

C & N INTERNATIONAL 31C

RAL ROBBINS RACHIS 55Z

C & N INTERNATIONAL 159E

ROBBINS INDIGO 36B

C & N ELDORENE 4S

RED ROBBINS INDIGO 13H

PERF	Act BW	Adj WW	Adj YW	EPDs	CE	BW	WW	YW	M	MCE
	79	648	1219		11	-1.6	51	94	22	9

RAL 16K has 5 sons in this sale. The average birth weight was 72 lbs and the average 365 weight was over 1300 lbs.

RS *C&N* INTERNATIONAL 159E

1982867 // CAN 159E // 12-Apr-17

Sire

Dam

SAV INTERNATIONAL 2020

CONNEALY ONWARD

C & N INTERNATIONAL 31C

C & N ELDORENE 4S

C & N ELDORENE 29Z

C & N ELDORENE 12P

PERF	Act BW	Adj WW	Adj YW	EPDs	CE	BW	WW	YW	M	MCE
	81	651	993		10	-0.7	50	104	25	8



C&N INTERNATIONAL 159E

DFD
DIESEL FUEL ONLY
403-632-2055

**MINIMIZING DOWNTIME.
 MAXIMIZING PERFORMANCE.
 RELIABILITY YOU CAN COUNT ON.**

Tired of mole hills and gopher mounds?
 Check out our land rollers with a leveling blade...

- Hydraulic leveling blade
- Transport wheels
- 42" drums
- Drum length 16' up to 40'



Hilltop Manufacturing (2006) Ltd.
info@hilltopmanufacturing.com
 (403) 627-1885

BUILDING FOR THE
NEXT GENERATION

CUSTOM SHOPS, BARN,
+ POLE BUILDINGS

WWW.LEWISCON.COM



LEWIS
CONSTRUCTION

QUALITY

INTEGRITY

EFFICIENCY

Sinnott Farm Services Ltd.
Pincher Creek, Alberta

Curtis, Murray, Marj & George Sinnott
Phone: 403.627.2001
Cell: 403.627.8466
Fax: 403.627.5096
E-mail: cgs128@telusplanet.net
www.sinnottfarmservices.com



"Thank you Farmers for feeding a growing world."



Creating more value together!

Complete feed, supplement, premix, pellet and textured feed options.

Options optimized with



Contact your Trouw Nutrition advisor today!

BJ Scheirlinck
Beef Sales Representative
(403) 915-8193



AGRICULTURE IS THE ONLY BUSINESS THERE IS. FOR OUR AG TEAM ANYWAY.

See what's possible when you have a dedicated team of ag experts on your side. And a full suite of financial solutions for agriculture.

atb.com/agriculture



POWERING POSSIBILITY





NO BULL HERE.

You have no time for downtime, and we get it. You and your cattle deserve the best. And that's no bull.

Top Brands

Count on John Deere, Highline®, and Bale King equipment to get the job done right.

More Selection

Get everything from loader tractors to balers to MoCos and more.

Unmatched Support

We back you up with the best-trained technicians and best parts availability in the business.

Brandt Agriculture Pincher Creek
1165 Main Street, Pincher Creek, AB

403-627-4451
more.brandt.ca/john-deere



**NOBLE
EQUIPMENT LTD.**

Nobleford • Olds • Ponoka
1-877-490-3020
www.nobleequipment.ca



"Hay, Forage and Material Handling Specialists"

Innovative Veterinary Services

Veterinary Care Specializing in Bovine, Equine, and Swine Services

- Dr. Joel Ballard •
- Dr. Storm Bartsoff & Dr. Kyle Mitchell •
- Dr. Grayson Ross •

Winnipeg, MB

O: (204) 237-8107

Lethbridge, Ab

O: (403) 380-6650

Brandon, MB

O: (204) 727-7807

HEALTHY
BARNs



HIGH
PERFORMANCE

SKYLINE MOTORSPORTS 
on the trail to the mountains...

Merlin Lewis: (403)627-7895 (cell)
6029 Hwy 6, Pincher Creek, Alberta

Farm & Ranch
Packages
Available

POLARIS

Outside Sales - Mountain Toys, Cochrane, AB



Proud to support the community in all your large and small animal needs
Business Hours: 403-627-4212
Afterhours: 403-627-3912

BRYCE CONLEY



- ✓ EQUIPMENT
- ✓ GRAIN
- ✓ BALES
- ✓ CATTLE
- ✓ & MORE!

403-339-0187

PROUDLY SERVING ALBERTA, B.C. & SASKATCHEWAN



FOR ALL YOUR LIVESTOCK HAULING NEEDS



John Bill van Garderen

OWNER | OPERATOR

403.892.3508 | janam03@hotmail.com

Box 106 Diamond City, AB T0K 0T0



Chartered Professional Accountants

1045 Hewetson Avenue

PO Box 430

Pincher Creek, AB T0K 1W0

(403)627-4979

www.boesellp.com

COVERS & CO.

CONNECTING FARMERS TO SOIL HEALTH

Frank Welsch

Dealer

Cover crop and forage seeds | 403 339 8950 | coversandco.ca

Fountain Tire

Passenger, Industrial
Farm & Commercial
Tires

"Your complete service center"

403/627-4456

JOE GILMORE

Box 3120
Pincher Creek, AB
T0K 1W0
jogil99@gmail.com



LEWIS CATTLE OILERS

Home
403-627-2541

Cell
403-627-9191



Dr. Todd Baker

Pincher Creek Veterinary Clinic

1124 Waterton Ave.
(Waterton By-Pass)
Box 1269
Pincher Creek, AB T0K 1W0

Tel: (403) 627-3900

Fax: (403) 627-5752

Email: pcveter@hotmail.com



Equipment Sales
Custom Farming
Forage Sales

(403) 627 8299



RANCHERR BOOT COMPANY
www.rancherrbootcompany.com



Boss Feeds MINERAL TUBS

100% Canadian steam cooked mineral tubs manufactured in Alberta, designed by cattlemen for cattlemen. Proudly family owned and operated.

HELP PREVENT:
Scours | Ring Worm | Foot Rot | Acidosis | Coccidiosis |

A TUB FOR EVERY OPERATION

- Variety Of Protein Values
- Chelated Mineral Packs
- All Natural Options
- Custom Blends Available

CALL:
Brett Stewart: 403-331-0397
Burk Nish: 403-653-7544
Nathan Skilling: 403-849-8555

@bossfeedscanada
www.boss-feeds.ca

Simplot

GROWER SOLUTIONS

At Simplot Grower Solutions, we go above and beyond to get you field-proven solutions for any farming challenge you may face.

SGS Pincher Creek, AB
501 Station St. (Pincher Station)
877-677-3411

SGS Cardston, AB
33084 Range Road 25-1 (Hwy 5)
403-653-4532

Cattlemen Working For Cattlemen

Contact your local Crop Advisor today!

UFA

Agents Brad & Michelle Williams

Bulk Fuel Delivery
Cardlock
Lubrication Warehouse
Convenience Store

403-331-9199 1050 Corner Mountain

**CROW SIGNS
and EMBROIDERY**

PINCHER CREEK, AB

SIGNS
EMBROIDERY
SILKSCREENING
ENGRAVING

Suppliers:
San Mar Canada
S&S Activewear
Richlu, Stormtech
and more!

crowsigns@live.ca
www.crowsigns.ca
403-627-2795 714 Main St



**Backcountry
Butchering**

Tim Ewing
Store: 403.628.2686
508 Railway Avenue, Cowley, Alberta
backcountrybutchering@hotmail.com

*When quality counts,
count on us!*



**PINCHER CREEK CO-OP
Petroleum offers:**

- Bulk Fuel Delivery
- 24 hr Cardlock
- Full Lube Package
- Quality Products



Friendly and Knowledgeable Staff

1225 Main St. (403) 627-3606



Future Sons Sell



JWX MAGNUM 74M

JWX KING KONG 735K X ELDER'S BLACKJACK 788B

HOMO POLLED * BW 93 lbs * Act WW 985 lbs * Act YW 1,450 lbs

CE 11.6 BW -0.2. WW 63. YW 114 M 36

High selling Charolais bull in Canada in 2025, purchased at the Wilgenbusch Charolais Bull Sale.
Watch for his sons to be featured in our 7th Annual Bull Sale - Saturday, March 6th, 2027

Terms & Conditions

TERMS: The terms of the sale are cash, cheque or e-transfer payable immediately after the sale. Settlement is in Canadian funds. The right of the property shall not pass until settlement is paid in full. All settlements must be made with the clerks of the sale before any cattle will be released. Current exchange rates will be announced on sale day.

BIDDING: Each animal will sell to the highest bidder. Bidders unable to attend the sale may phone their bids and instructions to the sale manager, auctioneer, or special representatives. Bids must be received prior to the sale, in a sufficient time frame.

DISPUTES: In case of disputes, bidding will be reopened between the parties involved. If no further bid is made, the buyer will be the person from whom the auctioneer accepted the last bid. The auctioneer's decision in such matters will be final.

ANNOUNCEMENTS: All announcements made from the auction block on sale day will take precedence over the printed material. Errors discovered in the catalogue will be corrected from the auction stand at sale time and such correction will take precedence over printed material in the catalogue.

PURCHASER'S RISK: Each animal becomes the risk of the purchaser as soon as sold. Animals will be cared for at the purchaser's risk for a reasonable length of time. All animals left with the seller must be insured.

CERTIFICATE OF REGISTRATION: Each animal will carry papers issued by the Canadian Charolais Association or the Canadian Angus Association. A certificate of registry duly transferred will be furnished to the buyer after payment has been made.

IN-HERD SEMEN: Turnbull Charolais and A & L Robbins Ranching reserves the right to collect semen on any bull sold through the sale. Semen collection will be at seller's expense and the buyer's convenience.

BREEDER GUARANTEE: Should any bull fourteen months of age or over fail to prove a breeder after being used on cows known to be breeders, the matter shall be reported in writing to the seller within six months following the date of purchase or six months after the bull has reached fourteen months of age. The seller has the right and privilege of six months to prove that the bull is a breeder. No guarantee is given that semen collected from the bull will freeze.

EXCEPTION GUARANTEE: In the case where the animal is subjected to any hormonal or surgical reproductive techniques after the sale, this guarantee shall be null and void. The seller is not responsible for damage caused by foreign bodies after the animal has been sold or for sickness not apparent at sale time. In no event shall the seller be responsible for more than the purchase price.

INSURANCE: Insurance will be available for purchase on sale day.

DELIVERY: Assistance will be given with making delivery arrangements after the sale. The purchaser agrees shipping arrangements will be at the convenience of the seller but will be as soon as practical after the sale, at the buyer's risk.

ACCIDENTS: Although every precaution will be taken to protect the safety and comfort of buyers, neither Turnbull Charolais, A & L Robbins Ranching, the auctioneer, sale staff or Wright Livestock Marketing Services sale management assumes no responsibility in the matter and disclaims any liability, legal or otherwise, in the event of an accident or loss of property.

SALE MANAGER: Wright Livestock Marketing Services Ltd. is acting only as a medium between buyer and seller and is not responsible for any failure on the part of either party to live up to his/her obligations, or for any warranties, guarantees or representations, expressed or implied. Wright Livestock Marketing Services Ltd. does not assume any financial obligations to collect or enforce collection of any monies between parties. Wright Livestock Marketing Services Ltd. assumes no responsibility for any credit that is extended by the seller to the buyer. The buyer must look to the seller for the fulfillment of any/all guarantees and representations made. Any legal action that may, in exceptional circumstances/cases, be taken are solely between the buyer and the seller.

PICTURES: By attending the sale, you are granting permission for your picture to be used for promotional and advertising purposes relating to the sale, unless you notify the sellers/sale manager that you do not grant permission for your picture to be used.

RETURN UNDELIVERABLE CATALOGUES TO:
WRIGHT LIVESTOCK MARKETING

Box 238
Pangman, SK
S0C 2C0



Save the date

TURNBULL CHAROLAIS 7TH ANNUAL BULL SALE
SATURDAY, MARCH 6TH, 2027

Featuring Sons of Our Exciting New Herdsire:

JWX MAGNUM 74M
JWX KING KONG 735K X ELDER'S BLACKJACK 788B